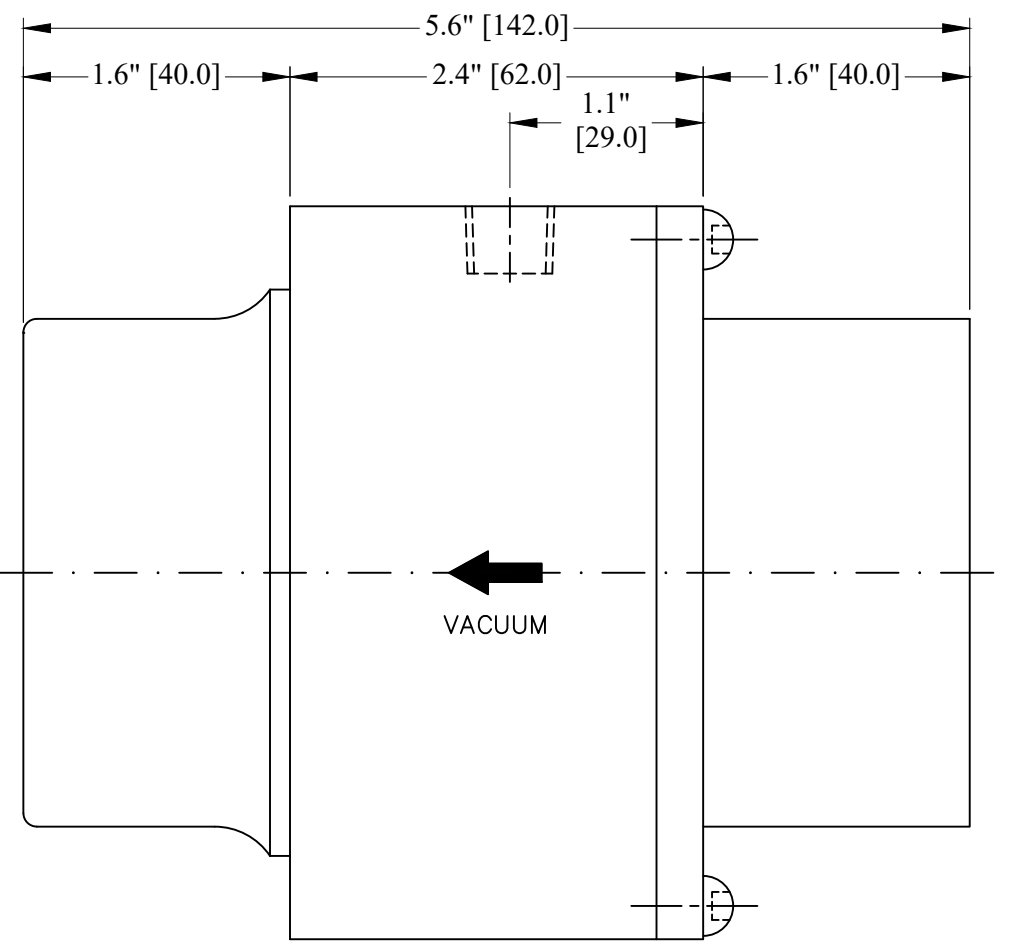


1/2" NPT  
AIR INLET

Ø4.3" [Ø110.0]  
M6 X 4 HOLES ON  
Ø3.9" [Ø100.0]  
PCD

Ø3.0" [Ø76.2]

Ø2.7" [Ø68.0]  
THRU. THROAT DIAMETER



**PROPRIETARY**  
REPRODUCTION OR DISTRIBUTION  
WITHOUT WRITTEN CONSENT OF  
NEXFLOW™ IS PROHIBITED.

THIRD ANGLE PROJECTION		REQUIREMENTS—UNLESS OTHERWISE SPECIFIED		CONTRACT NUMBER —		NEX FLOW AIR PRODUCTS CORP. 10520 YONGE STREET, UNIT 35B-220, RICHMOND HILL, ON L4C 3C7 TEL: (416) 410-1313 & FAX: (416) 410-1806 www.nex-flow.com	
MATERIAL		GENERAL		CLIENT —		TITLE	
HIGH TEMPERATURE STAINLESS STEEL		1. DRAWING TO BE MADE IN ACCORDANCE WITH AND TOLERANCING IN ACCORDANCE WITH AND 11.4.3 (1992)		CONTRACTOR —		3" HIGH TEMPERATURE STAINLESS STEEL RING VAC	
FINISH		3. MACHINE FRESH 125 MICRO INCH RMS		DRAWN		DATE	
BUFFING		4. INTERNAL RADI .018" (0.4)		CHRAGLAS		25/04/2021	
NEXT ASSEMBLY		5. BREAK SHARP CORNERS 0.000" (0.1) TO 0.018" (0.4)		FORM		CHECKED	
USED ON		LIMITS		LESS		CLA.	
QTY FOR ASBY		1. LINEAR DIMS XXX = .000" (0.1) YYY = .002" (0.05) ZZ = .005" (0.125)		STRESS		MANUFACTURING	
PART NO		2. ANGLES = ± 1/2°		THERMAL		MATERIALS	
		3. FINISH .010 TH		ELECTRICAL		SCALE	
		4. HOLES IN ACCORDANCE WITH AND 10.387				1:1	
						C	
						30006HTS	
						P 1	
						SHEET 1 OF 1	