

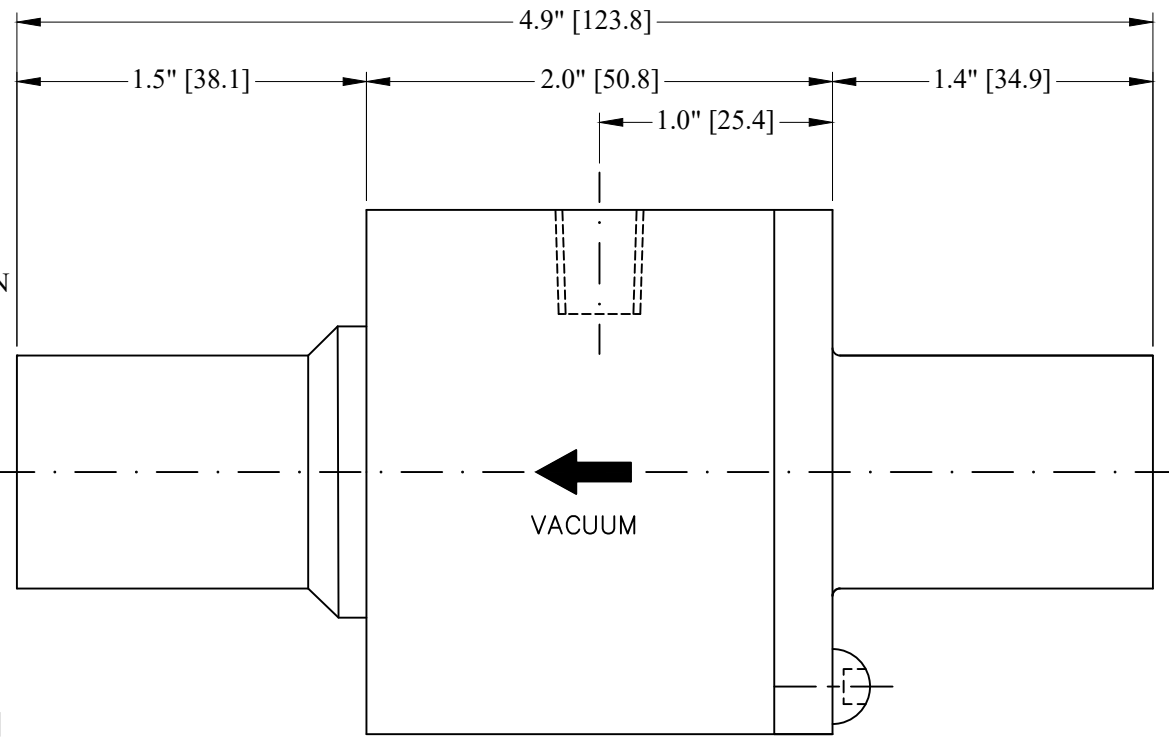
1/4" NPT
AIR INLET

Ø2.2" [Ø57.1]

M6 X 3 HOLES ON
Ø1.8" [Ø45.1]
PCD

Ø1.0" [Ø25.4]

Ø0.8" [Ø19.1]
THRU. THROAT DIAMETER



VACUUM

PROPRIETARY
REPRODUCTION OR DISTRIBUTION
WITHOUT WRITTEN CONSENT OF
NEXFLOW™ IS PROHIBITED.

THIRD ANGLE PROJECTION					
MATERIAL	HIGH TEMPERATURE STAINLESS STEEL				
FINISH	BUFFING				
NEXT ASSEMBLY		USED ON	QTY PER ASY	PART NO	

REQUIREMENTS—UNLESS OTHERWISE SPECIFIED	
GENERAL	
1.	DIMS ARE IN INCHES (DIM)
2.	DIMENSIONING AND TOLERANCING IN ACCORDANCE WITH ANSI Y14.5 (1982)
3.	MACHINE FINISH 125 MICRO INCH RMS
4.	INTERNAL RADI .015" (0.4)
5.	BREAS SHARP CORNERS 0.005" (0.1) TO 0.015" (0.4)
LIMITS	
1.	LINEAR DIMS. XXX = .005" (0.1) XX = .010" (0.25) X = .030" (0.75)
2.	ANGLES = ± 1/2°
3.	RUNDIT .010 TIR
4.	HOLES IN ACCORDANCE WITH AND 10387

CONTRACT NUMBER	—
CLIENT	—
CONTRACTOR	—
DRAWN	CHIRAG.S
DATE	25/04/2021
DESIGN	LES
CHECKED	LES
PROJECT	—
Q.A.	—
STRESS	—
MANUFACTURING	—
THERMAL	—
MATERIALS	—
MECHANISM	ELECTRICAL

NEX FLOW AIR PRODUCTS CORP. 10520 YONGE STREET, UNIT 35B-220, RICHMOND HILL, ON L4C 3C7 TEL: (416) 410-1313 & FAX: (416) 410-1806 www.nex-flow.com			
TITLE 1" HIGH TEMPERATURE STAINLESS STEEL RING VAC			
SIZE	CAGE CODE	DWG NO	RELEASE
C	—	30001HTS	P 1
SCALE	1:1	CAD NO	SHEET 1 OF 1