

8 7 6 5 4 3 2 1

E

D

C

B

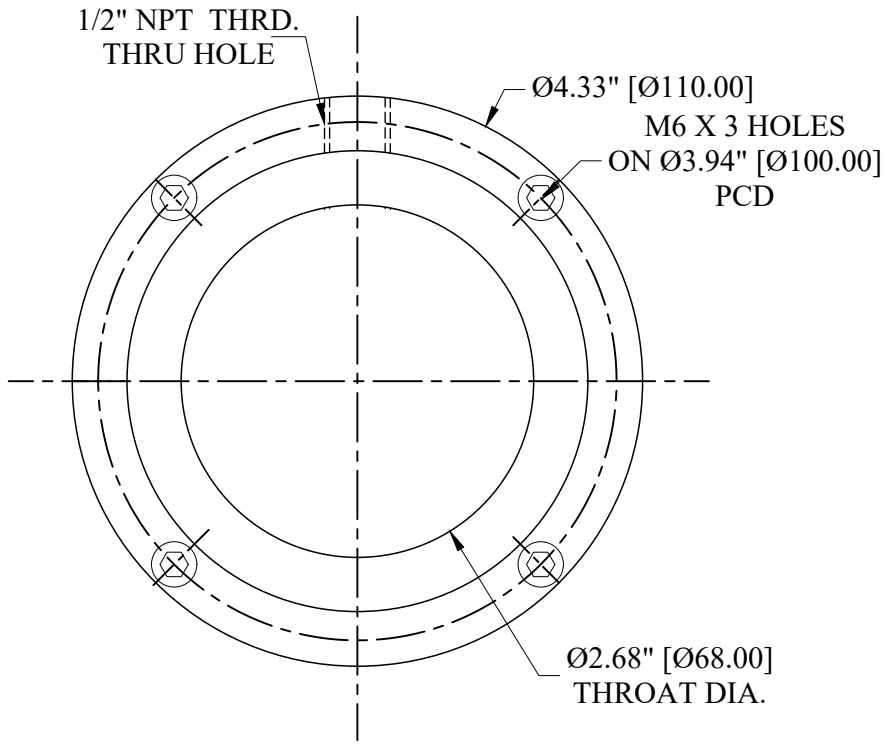
E

D

C

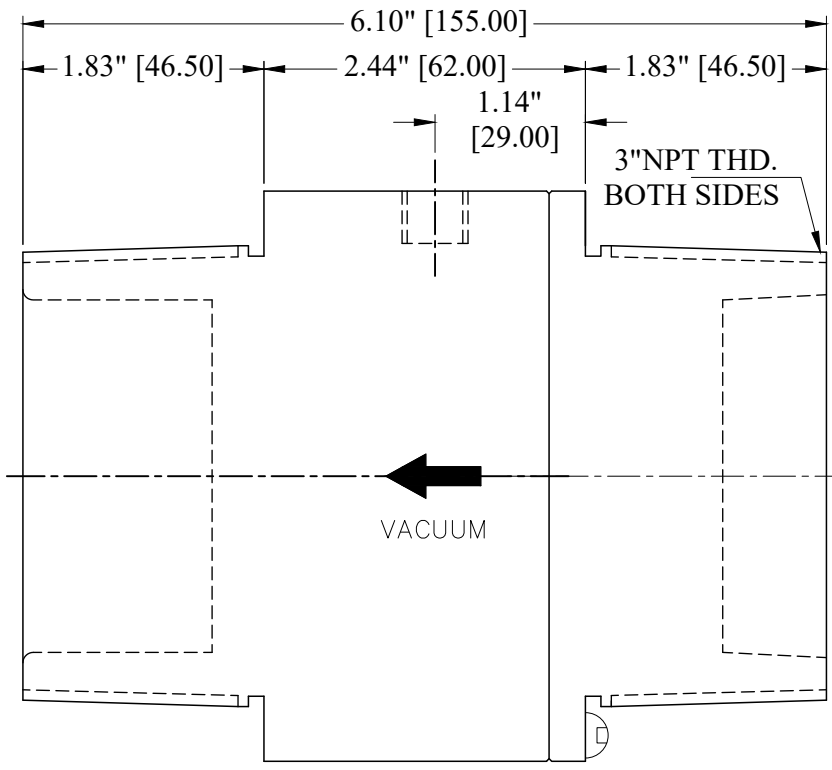
B

1/2" NPT THRD.  
THRU HOLE



Ø4.33" [Ø110.00]  
M6 X 3 HOLES  
ON Ø3.94" [Ø100.00]  
PCD

Ø2.68" [Ø68.00]  
THROAT DIA.



VACUUM

**PROPRIETARY**  
REPRODUCTION OR DISTRIBUTION  
WITHOUT WRITTEN CONSENT OF  
NEXFLOW™ IS PROHIBITED.

THIRD ANGLE PROJECTION	
MATERIAL	ALUMINIUM
FINISH	BLUE ANODIZING

REQUIREMENTS—UNLESS OTHERWISE SPECIFIED	GENERAL
1. DIMS ARE IN INCHES (MM)	
2. DIMENSIONING AND TOLERANCING IN ACCORDANCE WITH ANSI Y14.5 (1982)	
3. MACHINE FINISH 125 MICRO INCH RMS	
4. INTERNAL RADI .015	
5. BREAK SHARP CORNERS .005 TO .015	
LIMITS	
1. LINEAR DIMS.	
XXX = .005	
XX = .010	
X = .030	
2. ANGLES = ± 1/2°	
3. RUNOUT .010 TIR	
4. HOLES IN ACCORDANCE WITH AND 10387	

CONTRACT NUMBER	—
CLIENT	—
CONTRACTOR	—
DRAWN	CHIRAG.S
DATE	25/04/2021
CHECKED	LES
PROJECT	D.A.
STRESS	—
MANUFACTURING	—
THERMAL	—
MATERIALS	—
MECHANICAL	—
ELECTRICAL	—

SIZE	C
CAGE CODE	—
DWG NO	30006T
SCALE	1:1
CAD NO	—

NEX FLOW AIR PRODUCTS CORP. 10520 YONGE STREET, UNIT 358-220, RICHMOND HILL, ON L4C 3C7 TEL: (416) 410-1313 & FAX: (416) 410-1806 www.nex-flow.com	
<b>2" THREADED ALUMINIUM RING VAC</b>	
RELEASE	P
REV	—
SHEET	1 OF 1

8 7 6 5 4 3 2 1

A

A