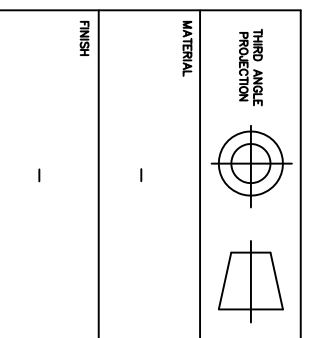
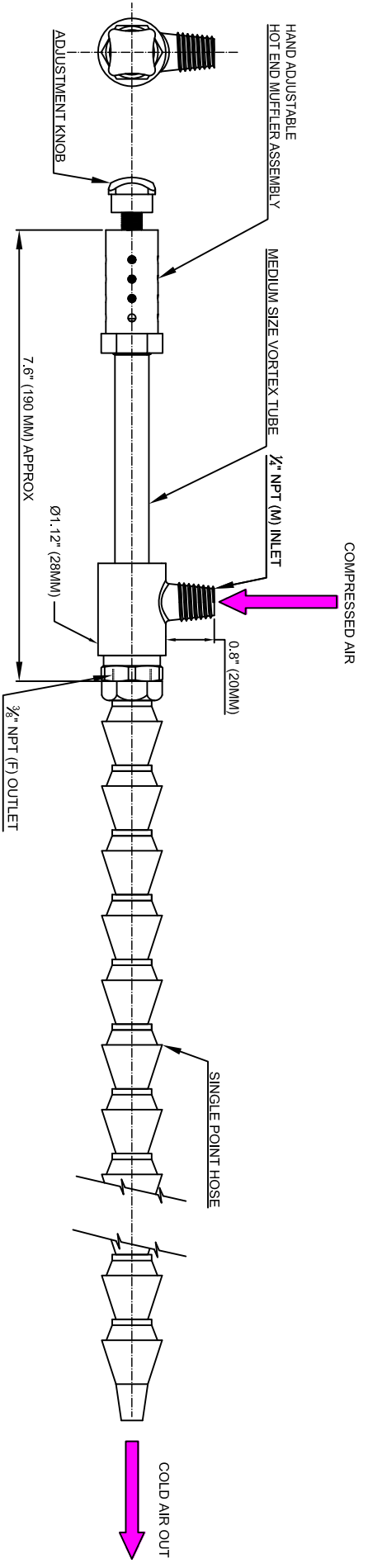


REVISIONS			
REV	DESCRIPTION	DATE	APPROVED
-	-	-	-

- NOTES:
- 1 ALL DIMENSIONS SHOWN ARE IN Inches (mm)
  - 2 ALL DIMENSIONS SHOWN ARE FINISH OPERATIONAL DIMENSIONS WHICH INCLUDE RESIDUAL COATINGS UNLESS OTHERWISE SPECIFIED.
  - 3 PART TO BE FLAT PACKED PROPERLY TO AVOID ANY DAMAGE WHILE SHIPPING & HANDLING.
  - 4 ALL HORIZONTAL DIMENSIONS ARE SYMMETRICAL ABOUT VERTICAL CENTER LINE UNLESS OTHERWISE SPECIFIED.



THIRD ANGLE PROJECTION	-	-	-	-	-
MATERIAL	-	-	-	-	-
FINISH	-	-	-	-	-
PART NO	-	-	-	-	-
NEXT ASSEMBLY	-	-	-	-	-
USED ON	-	-	-	-	-
QTY PER PART NO	-	-	-	-	-

REQUIREMENTS-UNLESS OTHERWISE SPECIFIED

GENERAL

1. DIMS ARE IN INCHES (MM)
2. DIMENSIONING AND TOLERANCING IN ACCORDANCE WITH ANSI Y14.5 (1982)
3. MACHINE FINISH 125 MICRO INCH RMS
4. INTERNAL RADI R015
5. BREAK SHARP CORNERS .005 TO .015

LIMITS

1. LINEAR DIMS.  
XX = .005  
XX = .010  
X = .030
2. ANGLES = ± 1/2°
3. RINOUT .010 TIR
4. HOLES IN ACCORDANCE WITH AND 10387

CONTRACT NUMBER	-
CLIENT	-
CONTRACTOR	-
BRAIN CHIRAGGS	DATE 10/11/2014
DESIGN	ORDERED
PROJECT	ASHISH
MANUFACTURING	G.A.
STRESS	-
THERMAL	-
MECHANISM	-
ELECTRICAL	-

TITLE

NEX FLOW AIR PRODUCTS CORP.  
10520 YONCE STREET, UNIT 35B-220, RICHMOND HILL, ON L4C 3C7  
TEL.: (416) 410-1313 & FAX: (416) 410-1806 www.nex-flow.com

OUTLINE DRAWING OF  
MEDIUM VORTEX TUBE WITH GENERATOR  
HAND ADJUSTABLE HOT END MUFFLER ASSEMBLY +  
SINGLE POINT HOSE KIT

SIZE C

SCALE 1:1

CAGE CODE M-500XX+55003+59001

DWG NO MVT+AHFM+SPH

CD NO

MANUFACTURING

RELEASE P

REV -

SHEET 1 OF 1