

THIRD ANGLE PROJECTION		REQUIREMENTS - FINISHES		CONTRACT NUMBER -		NEX FLOW AIR PRODUCTS CORP.	
GENERAL		GENERAL		CLIENT		10820 YONKE STREET, UNIT 358-220 RICHMOND HILL, ON L4C 3C7	
MATERIAL		1. DIMS ARE IN INCHES (IN)		CONTRACTOR		TEL.: (416) 410-1313 & FAX: (416) 410-1806 WWW.NEX-FLOW.COM	
DIE CAST ALUMINIUM		2. DIMENSIONS AND TOLERANCING IN ACCORDANCE WITH ANSI Y14.5 (1982)		CHIRAG S		DATE	
FINISH		3. MACHINE FINISH 125 MICRO INCH RMS		DESHA		18/04/2015	
		4. INTERNAL RADI: 015		ASHISH		CHECKED	
		5. BREAK SHARP CORNERS .005 TO .015		PROJECT		ASHISH	
		LIMITS		O.K.		DATE	
		1. LINEAR DIMS:		MATERIALS		18/04/2015	
		XXX = .005		FINISH		O.K.	
		XX = .010		ELECTRICAL		O.K.	
		X = .030		SCALE		1:1	
		ANGLES = ± 1/2°		CND NO		VE-B	
		4. HOLES IN ACCORDANCE WITH AND 10087		SHEET		1 OF 1	

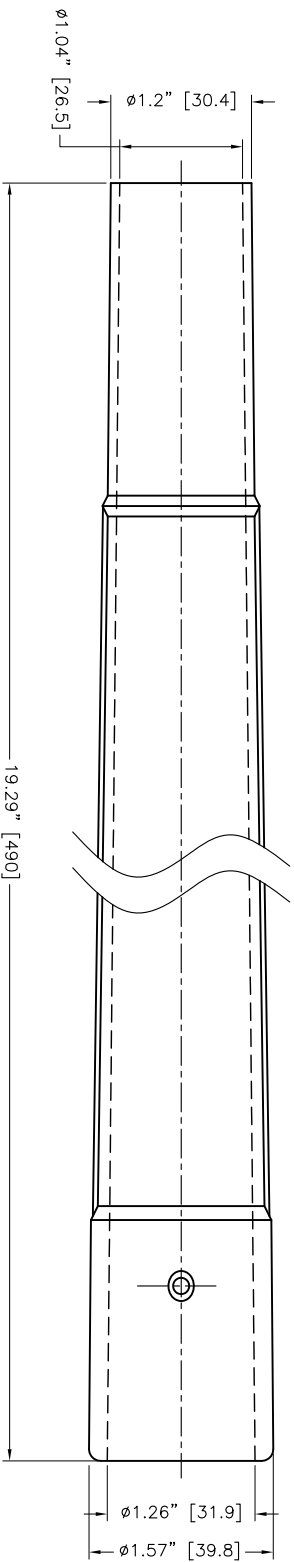
TITLE: X-STREAM HAND VAC BODY

REL: P REV: -

8 7 6 5 4 3 2 1

A B C D E

A B C D E



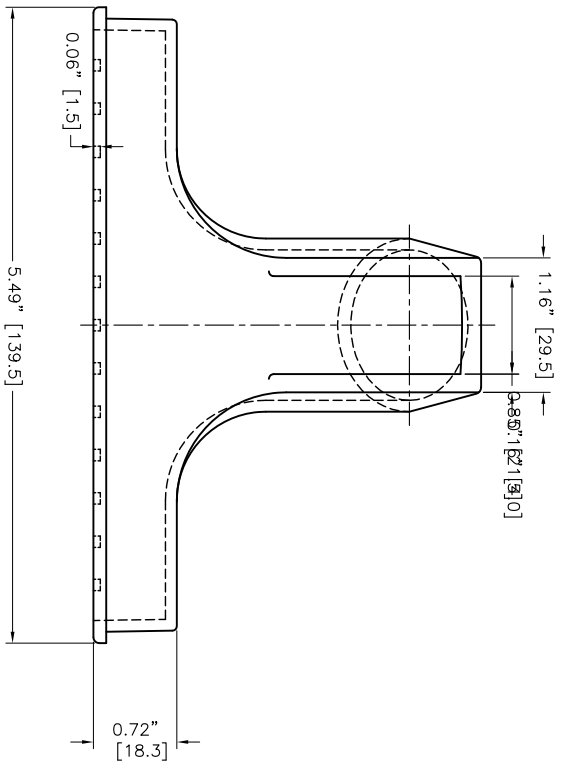
FRONT VIEW

SIDE VIEW

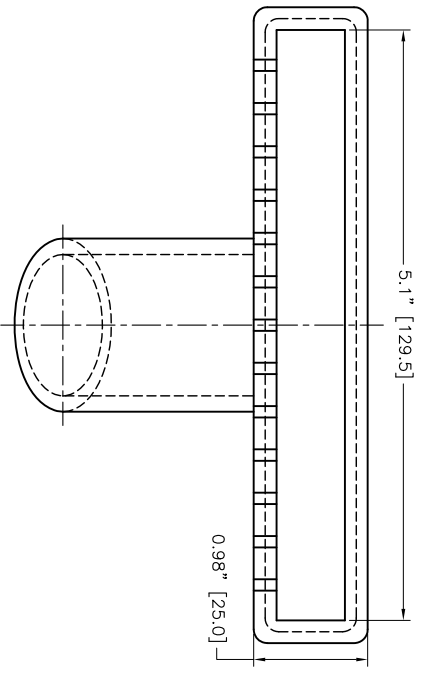
NOTE : 2 EXTENSION PIPES ARE PROVIDED PER SET.

REVISIONS		CONTRACT NUMBER		TITLE	
1	DATE ARE IN USE	GENERAL	CLIENT	NEX FLOW AIR PRODUCTS CORP.	
2	APPROVED FOR USE	CONTRACTOR	CONTRACTOR	10520 YONGE STREET, UNIT 359-220, RICHMOND HILL, ON L4C 3C7	
3	APPROVED FOR USE	DESIGN	DESIGN	TEL: (416) 410-1513 & FAX: (416) 410-1806 WWW.NEX-FLOW.COM	
4	INTERNAL FINISH 125 MICRO RICH NBS	DATE	DATE	EXTENSION PIPE	
5	INTERNAL FINISH 015	18/04/2015	18/04/2015	X-STREAM HAND VAC	
6	INTERNAL FINISH 005 TO 015	DESIGN	DESIGN	PART NAME --	
7	INTERNAL FINISH 005 TO 015	DESIGN	DESIGN	EXTENSION PIPE	
8	INTERNAL FINISH 005 TO 015	DESIGN	DESIGN	SIZE	
9	INTERNAL FINISH 005 TO 015	DESIGN	DESIGN	CODE CODE	
10	INTERNAL FINISH 005 TO 015	DESIGN	DESIGN	DWN NO	
11	INTERNAL FINISH 005 TO 015	DESIGN	DESIGN	SCALE	
12	INTERNAL FINISH 005 TO 015	DESIGN	DESIGN	1:1	
13	INTERNAL FINISH 005 TO 015	DESIGN	DESIGN	C	
14	INTERNAL FINISH 005 TO 015	DESIGN	DESIGN	DWN NO	
15	INTERNAL FINISH 005 TO 015	DESIGN	DESIGN	VG-EP	
16	INTERNAL FINISH 005 TO 015	DESIGN	DESIGN	SHEET 1 OF 1	
17	INTERNAL FINISH 005 TO 015	DESIGN	DESIGN	P	
18	INTERNAL FINISH 005 TO 015	DESIGN	DESIGN	REV	
19	INTERNAL FINISH 005 TO 015	DESIGN	DESIGN	DATE	
20	INTERNAL FINISH 005 TO 015	DESIGN	DESIGN	18/04/2015	
21	INTERNAL FINISH 005 TO 015	DESIGN	DESIGN	18/04/2015	
22	INTERNAL FINISH 005 TO 015	DESIGN	DESIGN	18/04/2015	
23	INTERNAL FINISH 005 TO 015	DESIGN	DESIGN	18/04/2015	
24	INTERNAL FINISH 005 TO 015	DESIGN	DESIGN	18/04/2015	
25	INTERNAL FINISH 005 TO 015	DESIGN	DESIGN	18/04/2015	
26	INTERNAL FINISH 005 TO 015	DESIGN	DESIGN	18/04/2015	
27	INTERNAL FINISH 005 TO 015	DESIGN	DESIGN	18/04/2015	
28	INTERNAL FINISH 005 TO 015	DESIGN	DESIGN	18/04/2015	
29	INTERNAL FINISH 005 TO 015	DESIGN	DESIGN	18/04/2015	
30	INTERNAL FINISH 005 TO 015	DESIGN	DESIGN	18/04/2015	
31	INTERNAL FINISH 005 TO 015	DESIGN	DESIGN	18/04/2015	
32	INTERNAL FINISH 005 TO 015	DESIGN	DESIGN	18/04/2015	
33	INTERNAL FINISH 005 TO 015	DESIGN	DESIGN	18/04/2015	
34	INTERNAL FINISH 005 TO 015	DESIGN	DESIGN	18/04/2015	
35	INTERNAL FINISH 005 TO 015	DESIGN	DESIGN	18/04/2015	
36	INTERNAL FINISH 005 TO 015	DESIGN	DESIGN	18/04/2015	
37	INTERNAL FINISH 005 TO 015	DESIGN	DESIGN	18/04/2015	
38	INTERNAL FINISH 005 TO 015	DESIGN	DESIGN	18/04/2015	
39	INTERNAL FINISH 005 TO 015	DESIGN	DESIGN	18/04/2015	
40	INTERNAL FINISH 005 TO 015	DESIGN	DESIGN	18/04/2015	
41	INTERNAL FINISH 005 TO 015	DESIGN	DESIGN	18/04/2015	
42	INTERNAL FINISH 005 TO 015	DESIGN	DESIGN	18/04/2015	
43	INTERNAL FINISH 005 TO 015	DESIGN	DESIGN	18/04/2015	
44	INTERNAL FINISH 005 TO 015	DESIGN	DESIGN	18/04/2015	
45	INTERNAL FINISH 005 TO 015	DESIGN	DESIGN	18/04/2015	
46	INTERNAL FINISH 005 TO 015	DESIGN	DESIGN	18/04/2015	
47	INTERNAL FINISH 005 TO 015	DESIGN	DESIGN	18/04/2015	
48	INTERNAL FINISH 005 TO 015	DESIGN	DESIGN	18/04/2015	
49	INTERNAL FINISH 005 TO 015	DESIGN	DESIGN	18/04/2015	
50	INTERNAL FINISH 005 TO 015	DESIGN	DESIGN	18/04/2015	
51	INTERNAL FINISH 005 TO 015	DESIGN	DESIGN	18/04/2015	
52	INTERNAL FINISH 005 TO 015	DESIGN	DESIGN	18/04/2015	
53	INTERNAL FINISH 005 TO 015	DESIGN	DESIGN	18/04/2015	
54	INTERNAL FINISH 005 TO 015	DESIGN	DESIGN	18/04/2015	
55	INTERNAL FINISH 005 TO 015	DESIGN	DESIGN	18/04/2015	
56	INTERNAL FINISH 005 TO 015	DESIGN	DESIGN	18/04/2015	
57	INTERNAL FINISH 005 TO 015	DESIGN	DESIGN	18/04/2015	
58	INTERNAL FINISH 005 TO 015	DESIGN	DESIGN	18/04/2015	
59	INTERNAL FINISH 005 TO 015	DESIGN	DESIGN	18/04/2015	
60	INTERNAL FINISH 005 TO 015	DESIGN	DESIGN	18/04/2015	
61	INTERNAL FINISH 005 TO 015	DESIGN	DESIGN	18/04/2015	
62	INTERNAL FINISH 005 TO 015	DESIGN	DESIGN	18/04/2015	
63	INTERNAL FINISH 005 TO 015	DESIGN	DESIGN	18/04/2015	
64	INTERNAL FINISH 005 TO 015	DESIGN	DESIGN	18/04/2015	
65	INTERNAL FINISH 005 TO 015	DESIGN	DESIGN	18/04/2015	
66	INTERNAL FINISH 005 TO 015	DESIGN	DESIGN	18/04/2015	
67	INTERNAL FINISH 005 TO 015	DESIGN	DESIGN	18/04/2015	
68	INTERNAL FINISH 005 TO 015	DESIGN	DESIGN	18/04/2015	
69	INTERNAL FINISH 005 TO 015	DESIGN	DESIGN	18/04/2015	
70	INTERNAL FINISH 005 TO 015	DESIGN	DESIGN	18/04/2015	
71	INTERNAL FINISH 005 TO 015	DESIGN	DESIGN	18/04/2015	
72	INTERNAL FINISH 005 TO 015	DESIGN	DESIGN	18/04/2015	
73	INTERNAL FINISH 005 TO 015	DESIGN	DESIGN	18/04/2015	
74	INTERNAL FINISH 005 TO 015	DESIGN	DESIGN	18/04/2015	
75	INTERNAL FINISH 005 TO 015	DESIGN	DESIGN	18/04/2015	
76	INTERNAL FINISH 005 TO 015	DESIGN	DESIGN	18/04/2015	
77	INTERNAL FINISH 005 TO 015	DESIGN	DESIGN	18/04/2015	
78	INTERNAL FINISH 005 TO 015	DESIGN	DESIGN	18/04/2015	
79	INTERNAL FINISH 005 TO 015	DESIGN	DESIGN	18/04/2015	
80	INTERNAL FINISH 005 TO 015	DESIGN	DESIGN	18/04/2015	
81	INTERNAL FINISH 005 TO 015	DESIGN	DESIGN	18/04/2015	
82	INTERNAL FINISH 005 TO 015	DESIGN	DESIGN	18/04/2015	
83	INTERNAL FINISH 005 TO 015	DESIGN	DESIGN	18/04/2015	
84	INTERNAL FINISH 005 TO 015	DESIGN	DESIGN	18/04/2015	
85	INTERNAL FINISH 005 TO 015	DESIGN	DESIGN	18/04/2015	
86	INTERNAL FINISH 005 TO 015	DESIGN	DESIGN	18/04/2015	
87	INTERNAL FINISH 005 TO 015	DESIGN	DESIGN	18/04/2015	
88	INTERNAL FINISH 005 TO 015	DESIGN	DESIGN	18/04/2015	
89	INTERNAL FINISH 005 TO 015	DESIGN	DESIGN	18/04/2015	
90	INTERNAL FINISH 005 TO 015	DESIGN	DESIGN	18/04/2015	
91	INTERNAL FINISH 005 TO 015	DESIGN	DESIGN	18/04/2015	
92	INTERNAL FINISH 005 TO 015	DESIGN	DESIGN	18/04/2015	
93	INTERNAL FINISH 005 TO 015	DESIGN	DESIGN	18/04/2015	
94	INTERNAL FINISH 005 TO 015	DESIGN	DESIGN	18/04/2015	
95	INTERNAL FINISH 005 TO 015	DESIGN	DESIGN	18/04/2015	
96	INTERNAL FINISH 005 TO 015	DESIGN	DESIGN	18/04/2015	
97	INTERNAL FINISH 005 TO 015	DESIGN	DESIGN	18/04/2015	
98	INTERNAL FINISH 005 TO 015	DESIGN	DESIGN	18/04/2015	
99	INTERNAL FINISH 005 TO 015	DESIGN	DESIGN	18/04/2015	
100	INTERNAL FINISH 005 TO 015	DESIGN	DESIGN	18/04/2015	

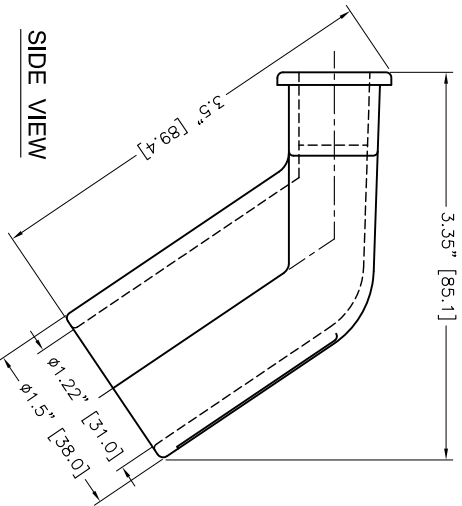
8 7 6 5 4 3 2 1



TOP VIEW

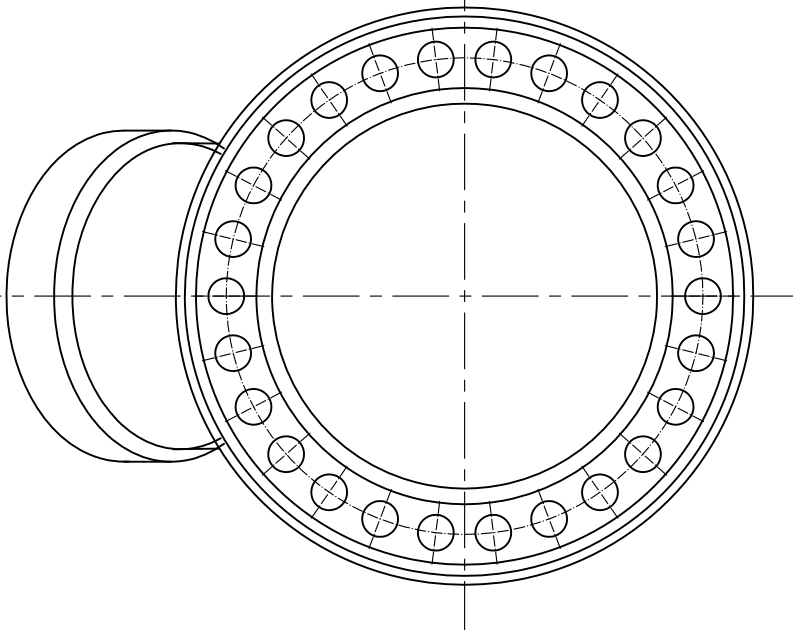


FRONT VIEW

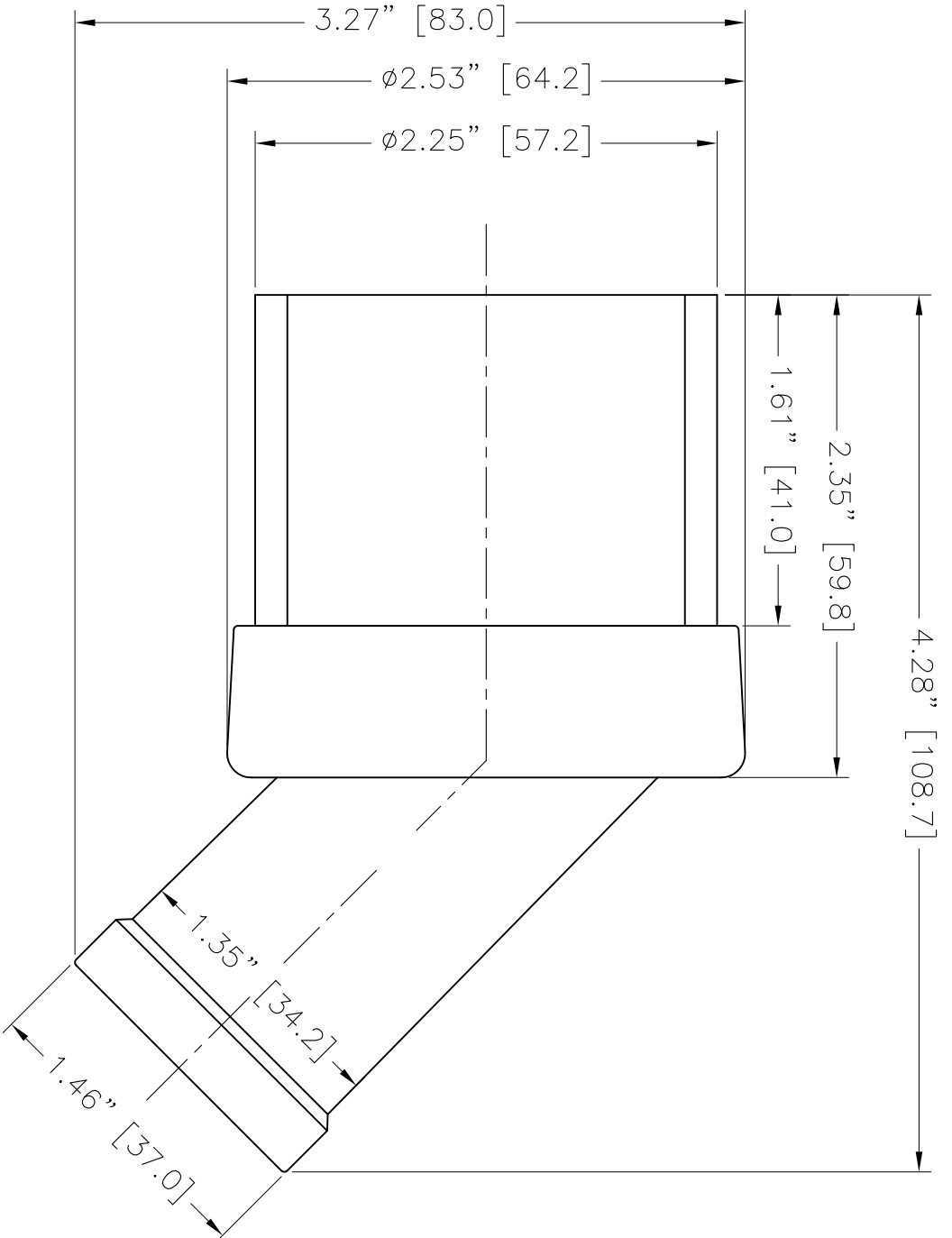


SIDE VIEW

		REQUIREMENTS-LIMITS OTHERWISE SPECIFIED		CONTRACT NUMBER -		CLIENT -		DATE -		TITLE -	
THIRD ANGLE PROJECTION		GENERAL		CONTRACTOR -		DATE -		10820 YONCE STREET, UNIT 359-220, RICHMOND HILL, ON L4C 3C7		10820 YONCE STREET, UNIT 359-220, RICHMOND HILL, ON L4C 3C7	
MATERIAL		1. DIMS ARE IN MM UNLESS NOTED OTHERWISE		STRAIN -		18/09/2015		TEL: (416) 410-1313 & FAX: (416) 410-1808 WWW.NEX-FLOW.COM		10820 YONCE STREET, UNIT 359-220, RICHMOND HILL, ON L4C 3C7	
PLASTIC		2. PROPOSED AND REVISIONS IN RED		CHIRAG S		18/09/2015		TEL: (416) 410-1313 & FAX: (416) 410-1808 WWW.NEX-FLOW.COM		10820 YONCE STREET, UNIT 359-220, RICHMOND HILL, ON L4C 3C7	
FINISH		3. MACHINE FINISH 125 MICRO INCH RMS		KEMAL		18/09/2015		TEL: (416) 410-1313 & FAX: (416) 410-1808 WWW.NEX-FLOW.COM		10820 YONCE STREET, UNIT 359-220, RICHMOND HILL, ON L4C 3C7	
NECK ASSEMBLY		4. INTERNAL RADIUS .015		ASHISH		18/09/2015		TEL: (416) 410-1313 & FAX: (416) 410-1808 WWW.NEX-FLOW.COM		10820 YONCE STREET, UNIT 359-220, RICHMOND HILL, ON L4C 3C7	
USED ON		5. BREAK SHARP CORNERS .005 TO .015		PROJECT		18/09/2015		TEL: (416) 410-1313 & FAX: (416) 410-1808 WWW.NEX-FLOW.COM		10820 YONCE STREET, UNIT 359-220, RICHMOND HILL, ON L4C 3C7	
BY		LIMITS		MANUFACTURING		18/09/2015		TEL: (416) 410-1313 & FAX: (416) 410-1808 WWW.NEX-FLOW.COM		10820 YONCE STREET, UNIT 359-220, RICHMOND HILL, ON L4C 3C7	
DATE		1. LINEAR DIMS		MATERIALS		18/09/2015		TEL: (416) 410-1313 & FAX: (416) 410-1808 WWW.NEX-FLOW.COM		10820 YONCE STREET, UNIT 359-220, RICHMOND HILL, ON L4C 3C7	
BY		2. ANGLES		TECHNICAL		18/09/2015		TEL: (416) 410-1313 & FAX: (416) 410-1808 WWW.NEX-FLOW.COM		10820 YONCE STREET, UNIT 359-220, RICHMOND HILL, ON L4C 3C7	
DATE		3. HOLE DIA		SCALE		1:1		TEL: (416) 410-1313 & FAX: (416) 410-1808 WWW.NEX-FLOW.COM		10820 YONCE STREET, UNIT 359-220, RICHMOND HILL, ON L4C 3C7	
BY		4. HOLES IN ACCORDANCE WITH AND 10927		DATE		18/09/2015		TEL: (416) 410-1313 & FAX: (416) 410-1808 WWW.NEX-FLOW.COM		10820 YONCE STREET, UNIT 359-220, RICHMOND HILL, ON L4C 3C7	



FRONT VIEW



SIDE VIEW

A

B

C

D

6

6

5

5

4

4

3

3

2

2

1

1

A

B

C

D

THIRD ANGLE PROJECTION	
MATERIAL	PLASTIC

REQUIREMENTS - UNLESS OTHERWISE SPECIFIED	GENERAL	CLIENT	CONTRACT NUMBER	-
1. DIMS ARE IN MM	TOLERANCING IN	CONTRACTOR	DATE	18/04/2015
2. ACCORDANCE WITH ANSI Y14.5 (1982)	3. MACHINE FINISH 125 MICRO INCH RMS	CHIRAG S	DESIGN	ASHISH
3. MACHINE FINISH 125 MICRO INCH RMS	4. INTERNAL RADI 0.15	PROJECT	MANUFACTURING	MANUFACTURING
4. INTERNAL RADI 0.15	5. BREAK SHARP CORNERS .005 TO 0.15	PRODUCT	MATERIALS	MATERIALS
5. BREAK SHARP CORNERS .005 TO 0.15	LIMITS	ASHISH	ELECTRICAL	ELECTRICAL

FINISH	-
NEXT ASSEMBLY	-
USED ON	-
QTY PER PART NO	-
PART NO	-

1. LINEAR DIMS.	.XXX = .005
2. ANGLES	XX = .010
3. ROUNDT .010 TIR	X = ± 1/2°
4. HOLES IN ACCORDANCE WITH AND 10387	

NEX FLOW AIR PRODUCTS CORP.	
10520 YONGE STREET, UNIT 358-220, RICHMOND HILL, ON L4C 3C7	
TEL: (416) 410-1313 & FAX: (416) 410-1806 WWW.NEX-FLOW.COM	
TITLE	X-STREAM HAND VAC
PART NAME	ROUND FLOOR CLEANING BRUSH
SIZE	CAGE CODE
C	DWG NO
SCALE	1:1
CAD NO	VG-RB
SHEET	1 of 1
RELEASE	REV
P	-