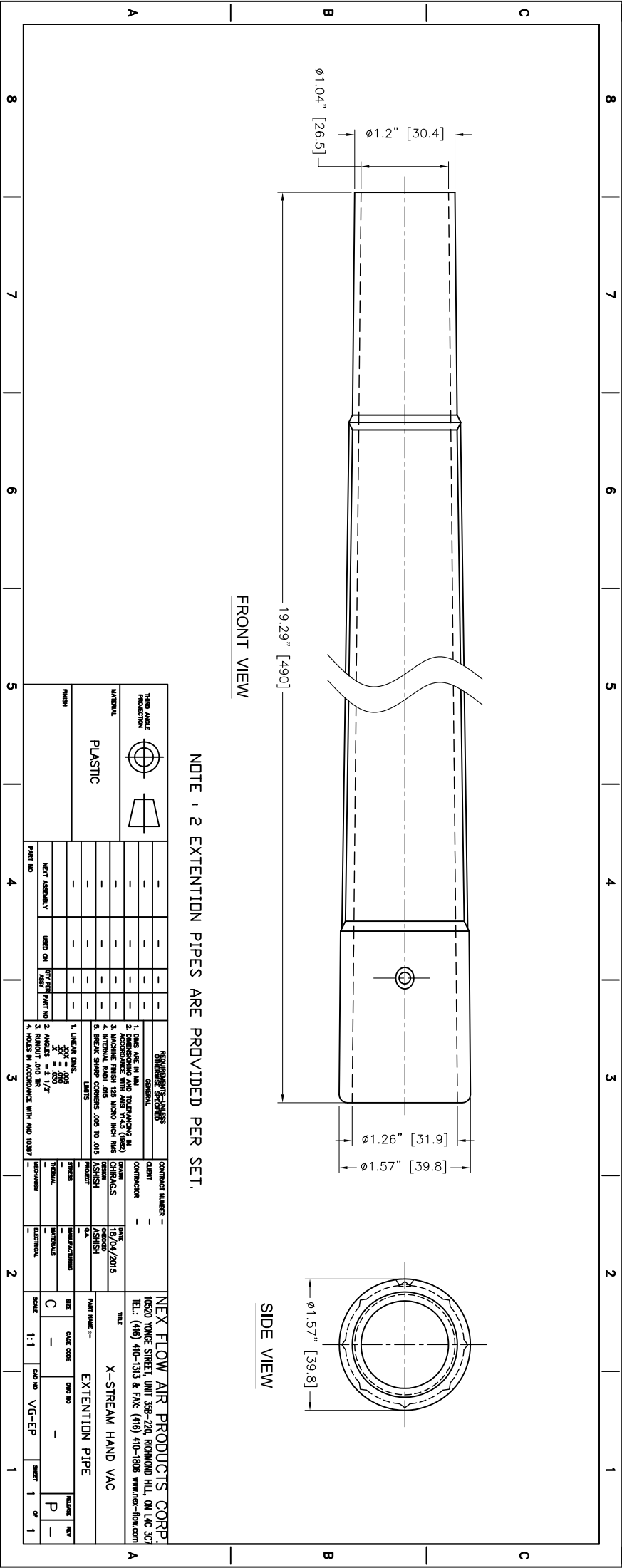


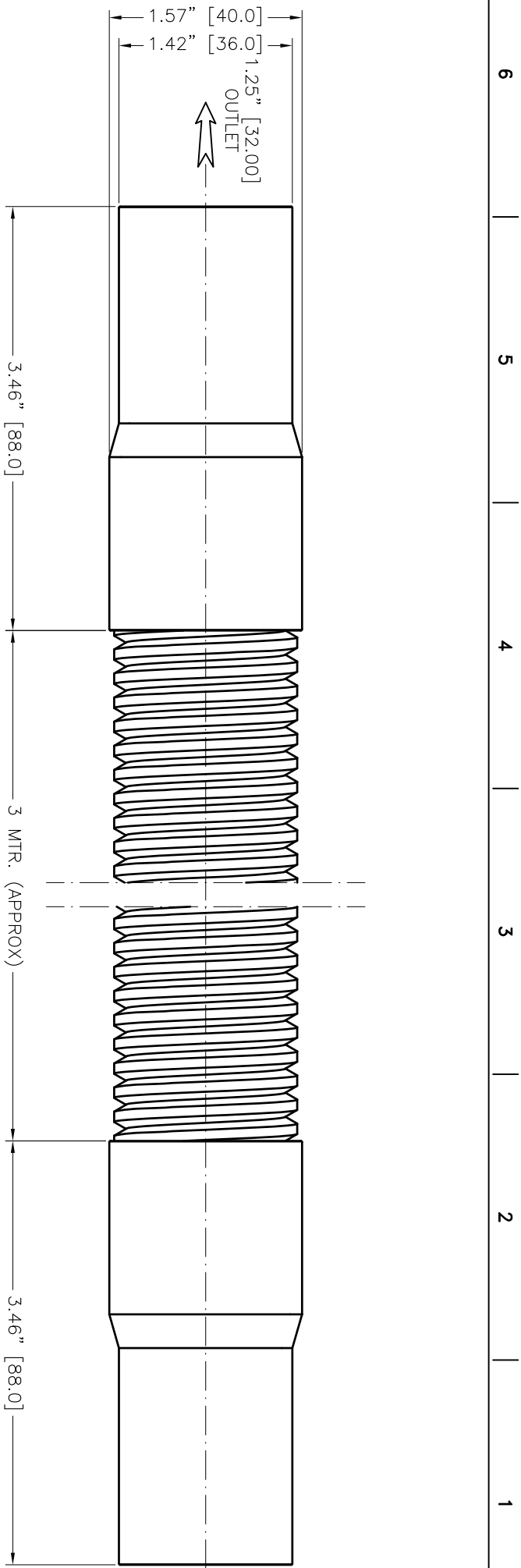
FRONT VIEW

SIDE VIEW

NOTE : 2 EXTENTION PIPES ARE PROVIDED PER SET.

REVISIONS		CONTRACT NUMBER		TITLE	
1	DATE ARE IN USE	GENERAL	CLIENT	10520 YONGE STREET, UNIT 359-220, RICHMOND HILL, ON L4C 3C7	NEX FLOW AIR PRODUCTS CORP.
2	APPROVED FOR USE	CONTRACTOR	CHIRIACS	TEL: (416) 410-1513 & FAX: (416) 410-1806 WWW.NEX-FLOW.COM	
MATERIAL		DESIGN		DATE	X-STREAM HAND VAC
PLASTIC		CHIRIACS		19/04/2015	
FINISH		REVISION		DESIGNED	EXTENSION PIPE
-		REVISION		CHIRIACS	
PART NO.		DRAWN		CHECKED	SCALE 1:1
NEXT ASSEMBLY		INTERVAL		ELECTRICAL	
USED ON		MATERIALS		MANUFACTURING	DWG NO. VG-EP
OTHER PART NO.		MATERIALS		MATERIALS	
PART NO.		MATERIALS		ELECTRICAL	SHEET 1 OF 1
NEXT ASSEMBLY		MATERIALS		ELECTRICAL	





THIRD ANGLE PROJECTION		REQUIREMENTS—UNLESS OTHERWISE SPECIFIED	
MATERIAL PLASTIC		GENERAL	
FINISH		LIMITS	
1. LINEAR DIMS. XX' = .005 XX" = .010 X = .030	2. ANGLES = 5 1/2°	3. RUNOUT = .010 TIR	4. HOLES IN ACCORDANCE WITH AND 10387
1. DIMS ARE IN MM AND TOLERANCING IN ACCORDANCE WITH ANSI Y14.5 (1982)	2. MACHINE FINISH 125 MICRO INCH RMS	3. INTERNAL RADI .015	4. BREAK SHARP CORNERS .005 TO .015
CONTRACT NUMBER	CLIENT	DATE	TITLE
CONTRACTOR	DESIGN	18/04/2015	X-STREAM HAND VAC
DRM	CHIRAG S	CHECKED	FLEXIBLE PLASTIC PIPE
DESIGN	ASHISH	ASHISH	WITH WELDED CUFFS
PROJECT	QA	MANUFACTURING	
STRESS		MATERIALS	
THERMAL		ELECTRICAL	
MECHANISM			
PART NAME: X-STREAM HAND VAC		SCALE: 1:1	CAD NO: VG-FP
PART NO:		SIZE: C	QMS NO: -
NEXT ASSEMBLY:		RELEASE	REV
USED ON:		P	-
QTY PER PART NO:		SHEET	1 OF 1
ASTY:			

6 5 4 3 2 1

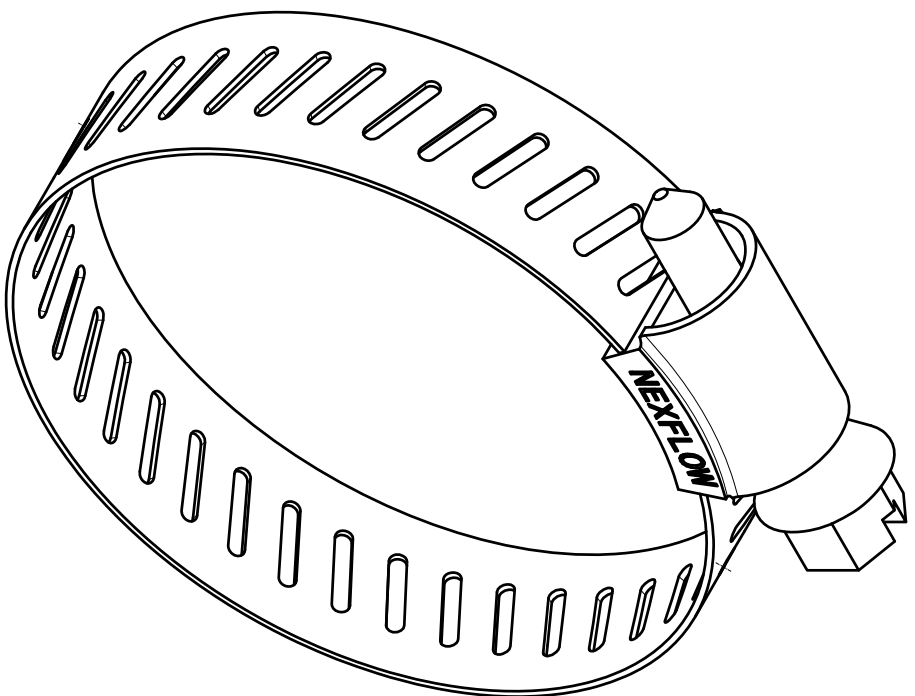
6 5 4 3 2 1

6 5 4 3 2 1

3.46" [88.0] 3 MTR. (APPROX) 3.46" [88.0]

1.57" [40.0] 1.42" [36.0] 1.25" [32.00] OUTLET



10520 YONGE STREET, UNIT 358-220 RICHMOND HILL, ON L4C 3C7
TEL: (416) 410-1313 & FAX: (416) 410-1806 WWW.NEX-FLOW.COM



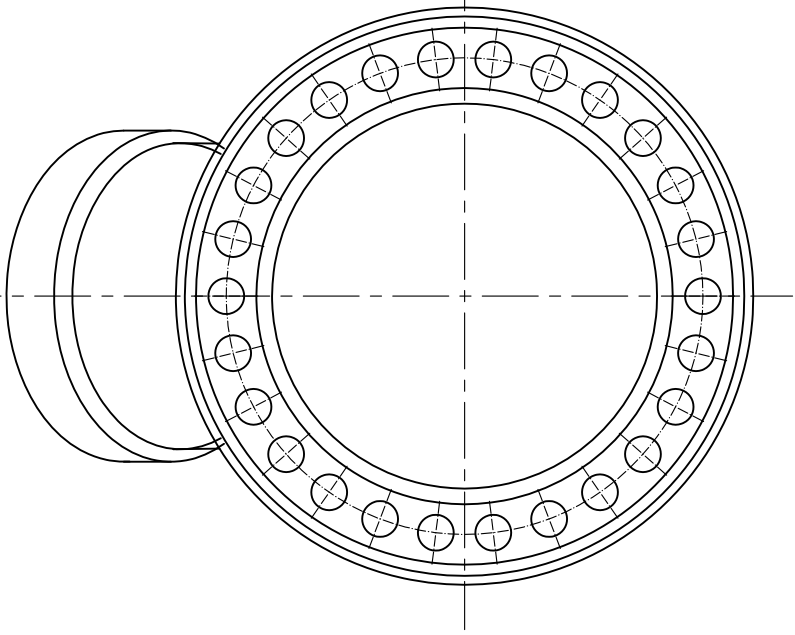
A B C D E

5 4 3 2 1

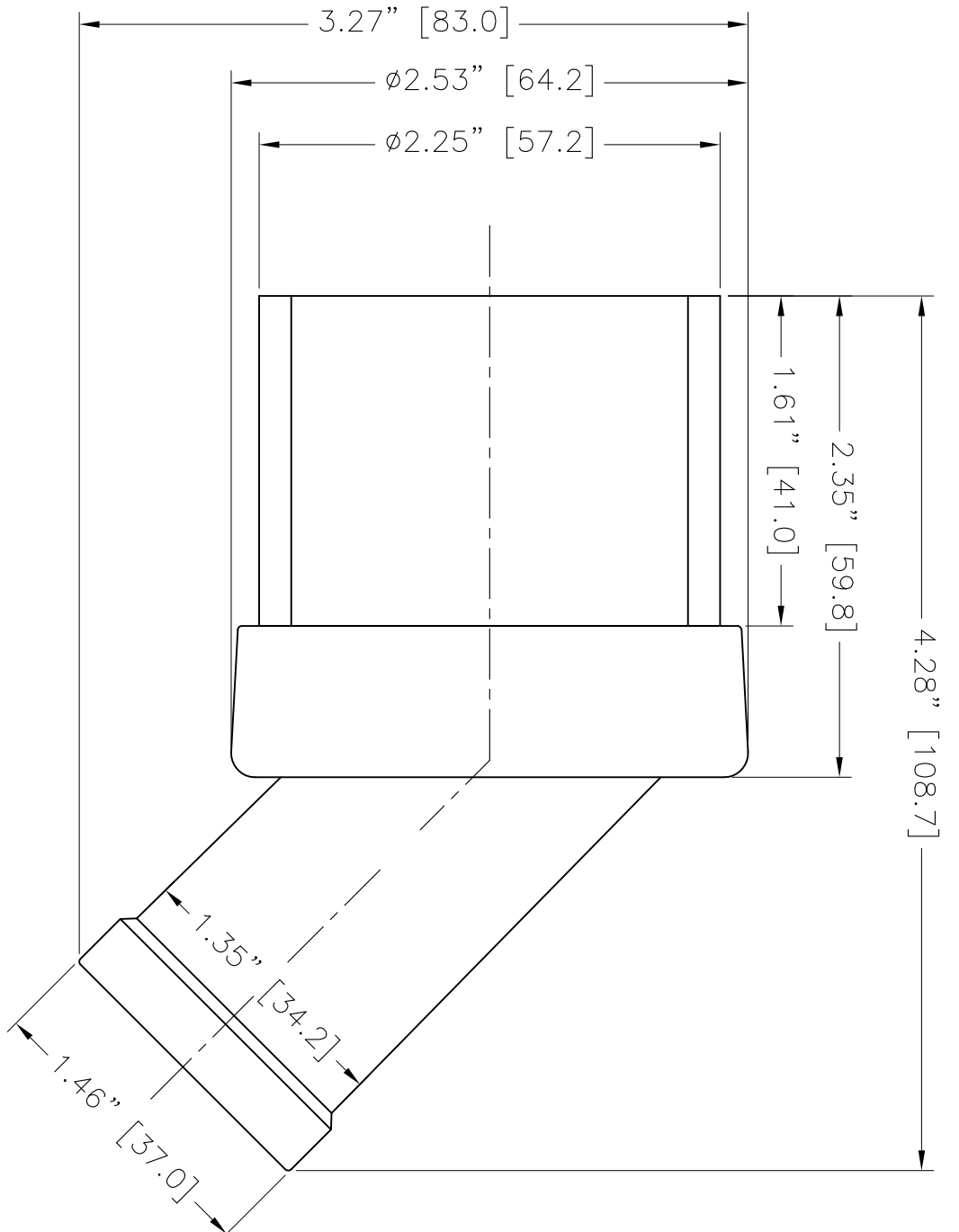
A B C D E

				THIRD ANGLE PROJECTION	
MATERIAL SS-304		FINISH 1. LINEAR DIMS. $2X = \pm .005$ $X = \pm .030$ $2. HOLE DIA. \pm .012$ 3. HOLES IN ACCORDANCE WITH AND 1097		REQUIREMENTS-LIMITS OTHERWISE SPECIFIED GENERAL 1. DIMS ARE IN MM UNLESS OTHERWISE SPECIFIED 2. DIMENSIONS AND TOLERANCES IN PARENT PARENTHESIS 3. MACHINE FINISH UNLESS OTHERWISE SPECIFIED 4. INTERNAL RADIUS .015 5. BREAK SHARP CORNERS .005 TO .015	
CONTRACT NUMBER - CLIENT - CONTRACTOR - DESIGNER - DATE ORDERED - PROJECT - MANUFACTURING - MATERIALS - DIMENSIONS - TECHNICAL - DRAWING NO. - SHEET NO. - REV. - DATE - BY - CHECKED - APPROVED - TITLE - PART NAME - SIZE - SCALE - CAGE CODE - QTY NO. - QTY NO. - VG-LR - SHEET 1 OF 1		CONTRACT NUMBER - CLIENT - CONTRACTOR - DESIGNER - DATE ORDERED - PROJECT - MANUFACTURING - MATERIALS - DIMENSIONS - TECHNICAL - DRAWING NO. - SHEET NO. - REV. - DATE - BY - CHECKED - APPROVED - TITLE - PART NAME - SIZE - SCALE - CAGE CODE - QTY NO. - QTY NO. - VG-LR - SHEET 1 OF 1		CONTRACT NUMBER - CLIENT - CONTRACTOR - DESIGNER - DATE ORDERED - PROJECT - MANUFACTURING - MATERIALS - DIMENSIONS - TECHNICAL - DRAWING NO. - SHEET NO. - REV. - DATE - BY - CHECKED - APPROVED - TITLE - PART NAME - SIZE - SCALE - CAGE CODE - QTY NO. - QTY NO. - VG-LR - SHEET 1 OF 1	

5 4 3 2 1



FRONT VIEW



SIDE VIEW

A

B

C

D

6 5 4 3 2 1

A

B

C

D

THIRD ANGLE PROJECTION		REQUIREMENTS - UNLESS OTHERWISE SPECIFIED		CONTRACT NUMBER -		NEX FLOW AIR PRODUCTS CORP. 10620 YONCE STREET, UNIT 358-220, RICHMOND HILL, ON L4C 3C7 TEL: (416) 410-1313 & FAX: (416) 410-1806 WWW.NEX-FLOW.COM	
MATERIAL PLASTIC		GENERAL		CLIENT		TITLE	
FINISH		1. DIMS ARE IN MM TOLERANCING IN ACCORDANCE WITH ANSI Y14.5 (1982)		CONTRACTOR		DATE	
NEXT ASSEMBLY		2. ACCORDANCE WITH ANSI Y14.5 (1982)		CHIRGAS S		18/04/2015	
USED ON		3. MACHINE FINISH 125 MICRO INCH RMS		PRODUCT		MANUFACTURING	
QTY PER PART NO		4. INTERNAL RADI 015		ASHISH		MATERIALS	
PART NO		5. BREAK SHARP CORNERS .005 TO 015 LIMITS		ASHISH		ELECTRICAL	
		1. LINEAR DIMS. .XXX = .005 .XX = .010 .X = .020		STRESS		SCALE	
		2. ANGLES = ± 1/2°		THERMAL		1:1	
		3. ROUNDT .010 TIR		MECHANISM		CAGE CODE	
		4. HOLES IN ACCORDANCE WITH AND 10387				DWG NO	
						-	
						VG-RB	
						SHEET	
						1 of 1	
						REV	
						P	
						-	

X-STREAM HAND VAC

ROUND FLOOR CLEANING BRUSH