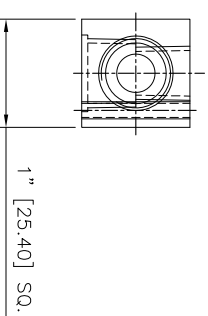
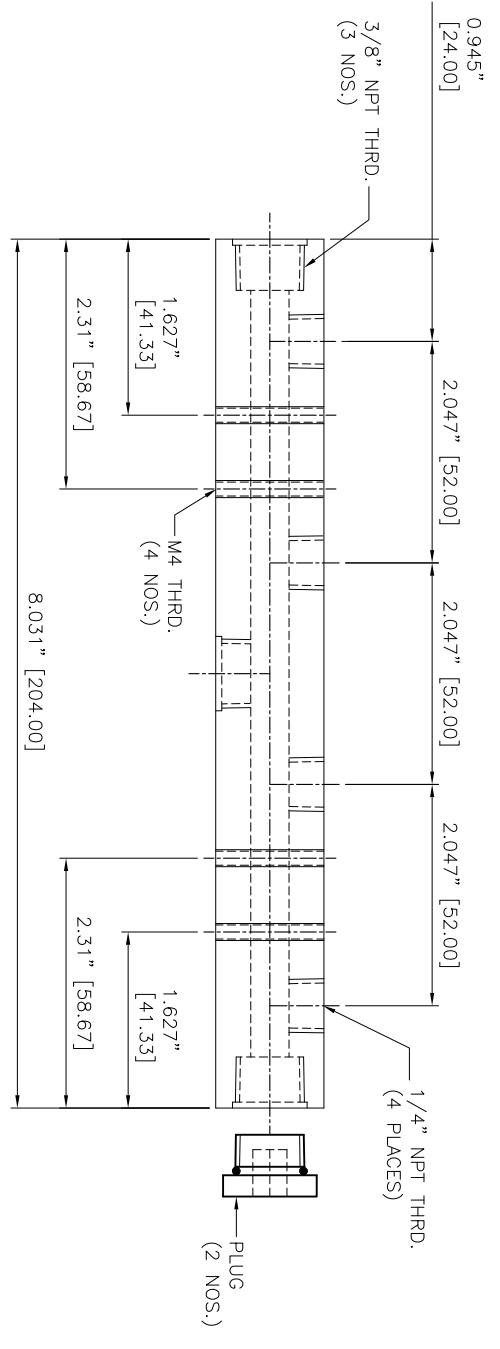


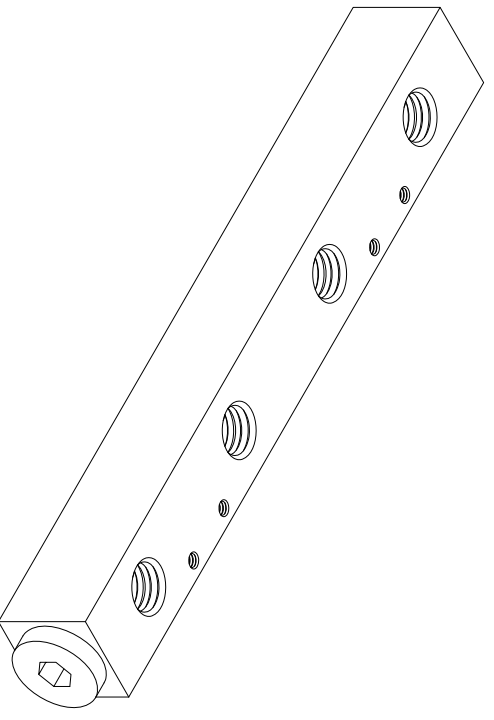
- NOTES:
- 1 ALL DIMENSIONS SHOWN ARE IN INCHES AND DIMENSIONS IN '()' ARE IN MM
 - 2 ALL DIMENSIONS SHOWN ARE FINISH OPERATIONAL DIMENSIONS WHICH INCLUDE RESIDUAL COATINGS UNLESS OTHERWISE SPECIFIED.
 - 3 PART TO BE FLAT PACKED PROPERLY TO AVOID ANY DAMAGE WHILE SHIPPING & HANDLING.
 - 4 ALL HORIZONTAL DIMENSIONS ARE SYMMETRICAL ABOUT VERTICAL CENTER LINE UNLESS OTHERWISE SPECIFIED.




SIDE VIEW
(without plug)

FRONT VIEW

ISOMETRIC VIEW



REVISIONS		DATE	APPROVED
1			
2			

TURN ANGLE PROJECTION 		CONTRACT NUMBER -	NEX FLOW AIR PRODUCTS CORP.
MATERIAL SS 304/SS 316/AL		CLIENT -	10520 YONCE STREET, UNIT 259-220, RICHMOND HILL, ON L4C 3C7 TEL: (416) 410-1313 & FAX: (416) 410-1806 www.nfx-flow.com
FINISH -		DRAWN S.PATIL	DATE 02/09/2014
REQUIREMENTS - UNLESS OTHERWISE SPECIFIED		DESIGN ASHISH	REVISION 4
1. LINEAR DIMS. .001 - .005 .006 - .010 .011 - .020 .021 - .050 .051 - .100 .101 - .150 .151 - .300 .301 - .500 .501 - 1.000 > 1.000		STRESS -	MANUFACTURING
2. DIMENSIONING AND TOLERANCING IN ACCORDANCE WITH ASME Y14.5 (1982)		TEMPERATURE -	WARRANTY
3. MACHINE FINISH 125 MICRO INCH RMS		MECHANICAL -	ELECTRONICAL
4. BREAK SHARP CORNERS .005 TO .015		SCHEMATIC -	SCALE 1:1
5. Holes in accordance with ASME 10.9.27		PRODUCT -	CDR NO MAA-4
6. HOLES IN ACCORDANCE WITH ASME 10.9.27		STRIPS -	SHEET 1 of 1
7. ANGLES = ± 1/2°		FINISH -	
8. ROUNDOFF .010 TR		QUALITY ASSURANCE	
9. Holes in accordance with ASME 10.9.27		USED ON	
10. Holes in accordance with ASME 10.9.27		QTY PER PART NO	
11. Holes in accordance with ASME 10.9.27		NEXT ASSEMBLY	
12. Holes in accordance with ASME 10.9.27		PART NO	

4 PORT REGULAR FLOW MANIFOLD

OUTLINE DRAWING OF

NEX FLOW AIR PRODUCTS CORP.

46004