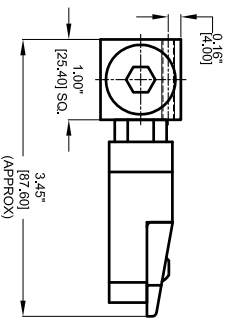
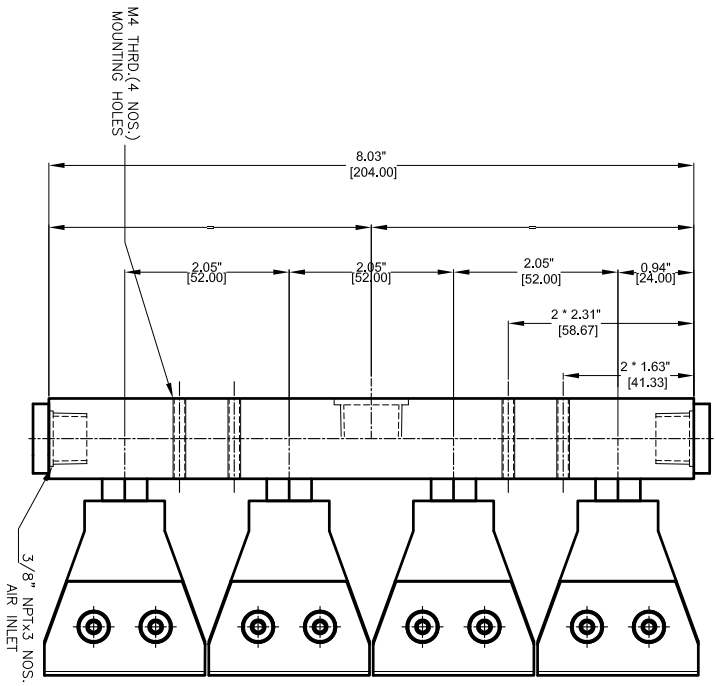
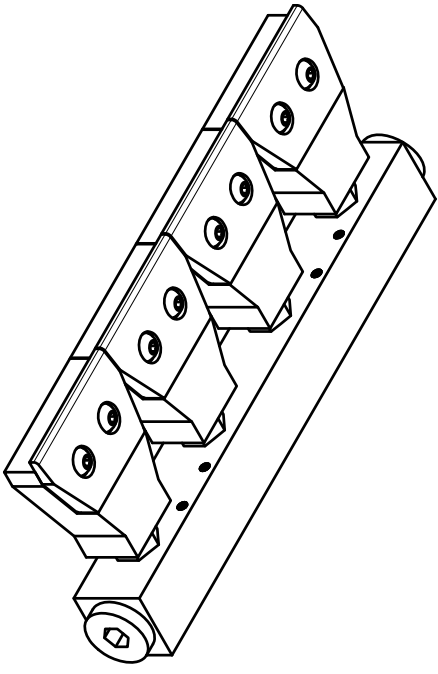


REVISIONS		DATE	APPROVED
REV	DESCRIPTION		
1	-	-	-



 	TEMP. AND PROTECTION AL/SS304/SS316L	REQUIREMENTS - FINISH OTHERS: SPECIFIED 1. FINISH AS IN SPECIFICATION 2. DIMENSIONING AND TOLERANCING IN ACCORDANCE WITH ASME Y14.5 (1982) 3. MACHINE FINISH 125 MICRO INCH RMS & BREAK SHARP CORNERS .005 TO .015 LIMITS 4. HOLES IN ACCORDANCE WITH AND 10397	CONTRACT NUMBER CLIENT: - CONTRACTOR: - DATE: 28/09/2014 DRAWN: - CHECKED: - DESIGNED: - MANUFACTURED BY: - MATERIALS: - FINISH: - PRODUCT: -	STRESS TENSILE: - YIELD: - ELONGATION: - ELECTRICAL: -	MANUFACTURING SIZE: - DATE CODE: - DIM NO: 46004+47011 MAN-44FU SCALE: 1:1	RELIEF REV: - SHEET: 1 OF 1
	FINISH -	REVISIONS 1. LINEAR DIMS: .005 .005 .005 2. ANGLES = ± 1/2° 3. ROUNDOFF .010 TR 4. HOLES IN ACCORDANCE WITH AND 10397	REVISIONS 1. LINEAR DIMS: .005 .005 .005 2. ANGLES = ± 1/2° 3. ROUNDOFF .010 TR 4. HOLES IN ACCORDANCE WITH AND 10397	CONTRACT NUMBER CLIENT: - CONTRACTOR: - DATE: 28/09/2014 DRAWN: - CHECKED: - DESIGNED: - MANUFACTURED BY: - MATERIALS: - FINISH: - PRODUCT: -	STRESS TENSILE: - YIELD: - ELONGATION: - ELECTRICAL: -	MANUFACTURING SIZE: - DATE CODE: - DIM NO: 46004+47011 MAN-44FU SCALE: 1:1

NEX FLOW AIR PRODUCTS CORP.
 10520 YONCE STREET, UNIT 259-220 RICHMOND HILL, ON L4C 3C7
 TEL: (416) 410-1313 & FAX: (416) 410-1806 WWW.NEX-FLOW.COM

4 PORT STANDARD FLOW MANIFOLD WITH 47011 FLATJET

8 7 6 5 4 3 2 1