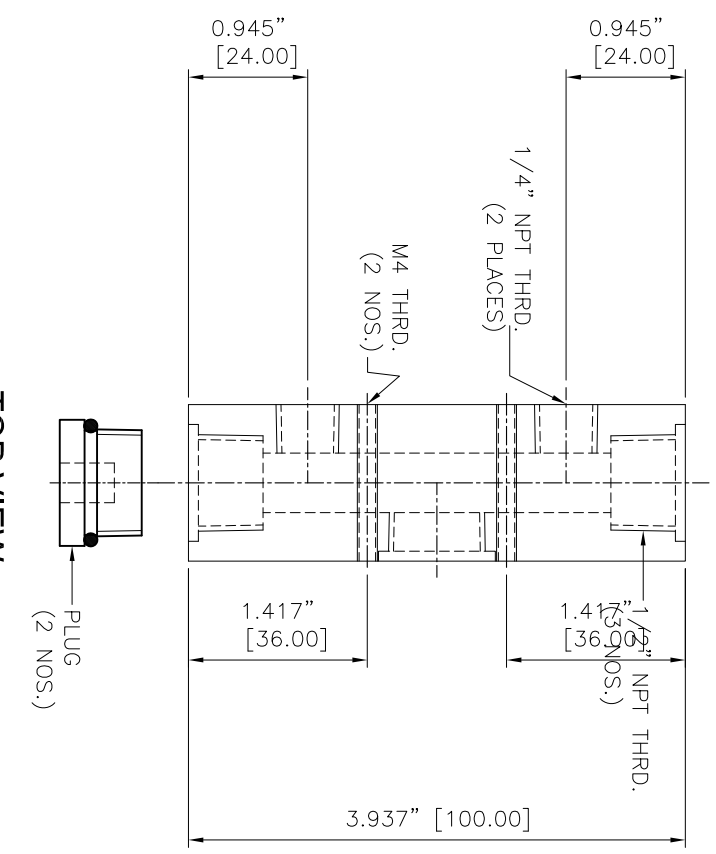


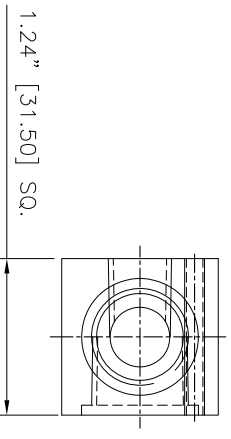
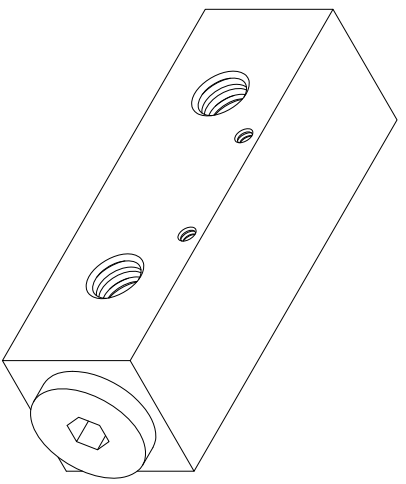
REVISIONS		DATE	APPROVED
REV	DESCRIPTION		
1			
2			

- NOTES:
- 1 ALL DIMENSIONS SHOWN ARE IN INCHES AND DIMENSIONS IN ( ) ARE IN mm
  - 2 ALL DIMENSIONS SHOWN ARE FINISH OPERATIONAL DIMENSIONS WHICH INCLUDE RESIDUAL COATINGS UNLESS OTHERWISE SPECIFIED.
  - 3 PART TO BE FLAT PACKED PROPERLY TO AVOID ANY DAMAGE WHILE SHIPPING & HANDLING.
  - 4 ALL HORIZONTAL DIMENSIONS ARE SYMMETRICAL ABOUT VERTICAL CENTER LINE UNLESS OTHERWISE SPECIFIED.



TOP VIEW

ISOMETRIC VIEW



FRONT VIEW  
(without plug)

<p>TEMP. AND PROTECTION</p> <p>MATERIAL</p> <p>SS 304/SS 316/AL</p> <p>FINISH</p> <p>-</p>		<p>REQUIREMENTS - UNLESS OTHERWISE SPECIFIED</p> <p>1. DIM. ARE IN UNLESS NOTED</p> <p>2. DIMENSIONS AND TOLERANCES IN ACCORDANCE WITH ASME Y14.5 (1982)</p> <p>3. MACHINE FINISH 125 MICRO INCH RMS</p> <p>4. BREAK SHARP CORNERS .005 TO .015</p> <p>1. LINEAR DIMS: .0005</p> <p>2. ANGLES = ± 1/2°</p> <p>3. ROUNDOFF .010 MIN</p> <p>4. HOLES IN ACCORDANCE WITH ANSI 10.9.1</p>	<p>CONTRACT NUMBER -</p> <p>CLIENT -</p> <p>CONTRACTOR -</p> <p>DRAWN S.P./TLL</p> <p>DESIGN</p> <p>DATE 28/05/2014</p> <p>MANUFACTURING</p> <p>DATE</p> <p>REVISIONS</p> <p>ELECTRICAL</p>	<p>TITLE</p> <p>NEX FLOW AIR PRODUCTS CORP.</p> <p>10520 YONCE STREET, UNIT 259-220 RICHMOND HILL, ON L4C 3C7</p> <p>TEL: (416) 410-1313 &amp; FAX: (416) 410-1806 www.nex-flow.com</p> <p>2 PORT HIGH FLOW MANIFOLD</p> <p>SCALE 1:1</p>	<p>DATE CODE</p> <p>46002HF</p> <p>REV</p> <p>P</p>
--	--	---	---	---	---

8 7 6 5 4 3 2 1