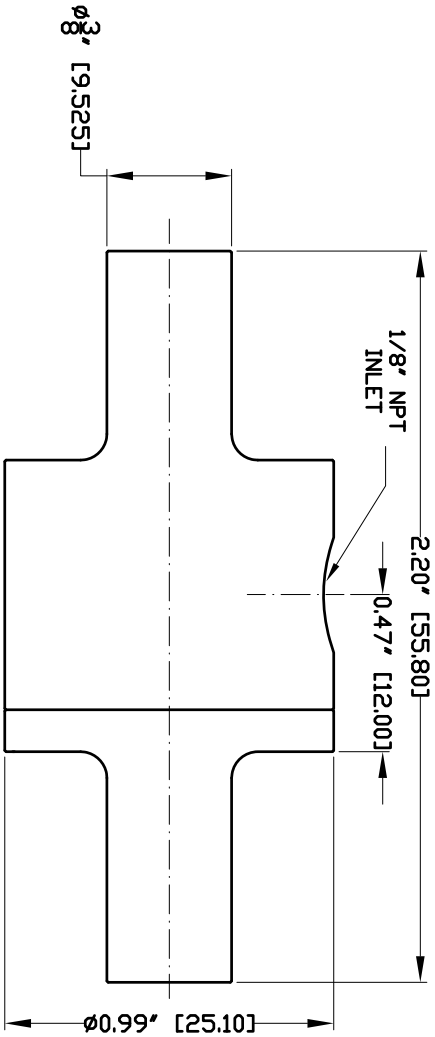
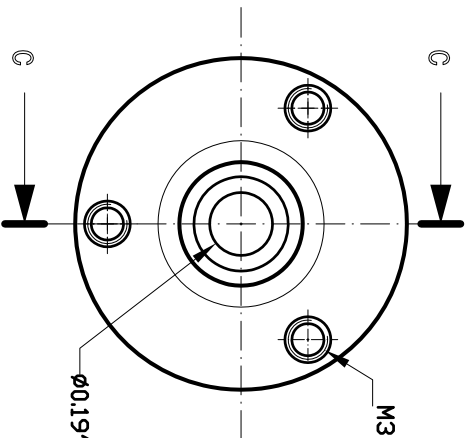


- NOTES:
- 1 ALL DIMENSIONS SHOWN ARE IN INCHES (MM)
 - 2 ALL DIMENSIONS SHOWN ARE FINISH OPERATIONAL DIMENSIONS WHICH INCLUDE RESIDUAL COATINGS UNLESS OTHERWISE SPECIFIED.
 - 3 PART TO BE FLAT PACKED PROPERLY TO AVOID ANY DAMAGE WHILE SHIPPING & HANDLING.
 - 4 ALL HORIZONTAL DIMENSIONS ARE SYMMETRICAL ABOUT VERTICAL CENTER LINE UNLESS OTHERWISE SPECIFIED.



Section view C-C



Front view

REVISIONS		DATE	APPROVED
REV	DESCRIPTION	-	-

THIRD ANGLE PROJECTION			
MATERIAL		FINISH	
<p>REQUIREMENTS—UNLESS OTHERWISE SPECIFIED</p> <p>GENERAL</p> <p>1. DIMS ARE IN INCHES (MM)</p> <p>2. DIMENSIONS AND TOLERANCING IN ACCORDANCE WITH ASME Y14.5 (2002)</p> <p>3. MACHINE FINISH 125 MICRO INCH RMS</p> <p>4. INTERNAL TAPER 0.15</p> <p>5. BREAK SHAPE CONFORMS A005 TO 0.15</p>		<p>CONTRACT NUMBER -</p> <p>CLIENT -</p> <p>CONTRACTOR -</p>	
<p>1. LINEAR DIMS. 0.005</p> <p>2. ANGLES 0.005</p> <p>3. HOLETS 0.010</p> <p>4. HOLES IN ACCORDANCE WITH A005 TO 0.007</p>		<p>DRAWN DATE 30/04/2016</p> <p>CHECKED DATE 30/04/2016</p> <p>DESIGNER DATE</p> <p>APPROVED DATE</p>	
<p>1. LINEAR DIMS. 0.005</p> <p>2. ANGLES 0.005</p> <p>3. HOLETS 0.010</p> <p>4. HOLES IN ACCORDANCE WITH A005 TO 0.007</p>		<p>MANUFACTURING</p> <p>SIZE 3/8" S.S.-304</p> <p>DATE CODE 39998S</p> <p>REV</p>	
<p>1. LINEAR DIMS. 0.005</p> <p>2. ANGLES 0.005</p> <p>3. HOLETS 0.010</p> <p>4. HOLES IN ACCORDANCE WITH A005 TO 0.007</p>		<p>SCALE 1:1</p> <p>DRG NO. 3/8"-SS304RV</p> <p>SHEET 1 OF 1</p>	

NEX FLOW AIR PRODUCTS CORP.
 10820 YONGE STREET, UNIT 35B-220, RICHMOND HILL, ON L4C 3C7
 TEL: (416) 410-1313 & FAX: (416) 410-1806 WWW.NEX-FLOW.COM

TITLE
 OUTLINE DRAWING OF
 3/8" S.S.-304 RING VAC