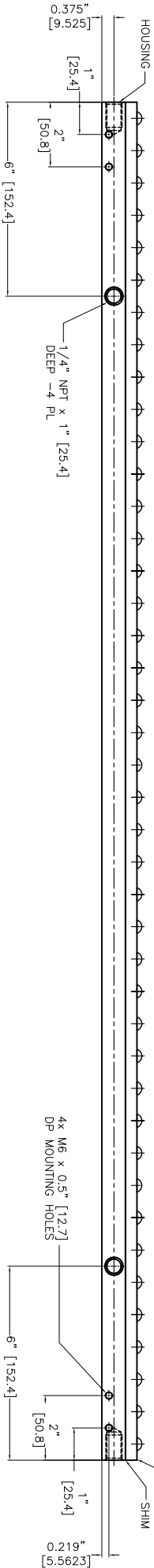
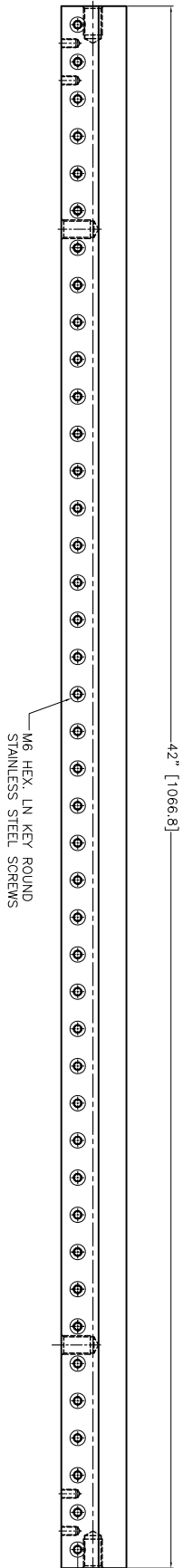
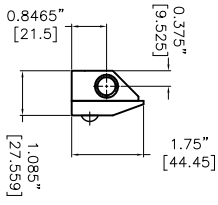


- NOTES:
- 1 ALL DIMENSIONS SHOWN ARE FINISH OPERATIONAL DIMENSIONS WHICH INCLUDE RESIDUAL COATINGS UNLESS OTHERWISE SPECIFIED.
 - 2 PART TO BE PACKED PROPERLY TO AVOID ANY DAMAGE WHILE SHIPPING & HANDLING.
 - 3 ALL HORIZONTAL DIMENSIONS ARE SYMMETRICAL ABOUT CENTER LINE UNLESS OTHERWISE SPECIFIED.



	THREAD AND PROJECTION SS 304		MATERIAL SS 304	FINISH -
		NEXT ASSEMBLY -		USED ON -
	QTY PER PART NO. -		PART NO. -	REQUIREMENTS - STAINLESS OTHERWISE SPECIFIED
	CONTRACT NUMBER -		CLIENT -	CONTRACTOR -
	DATE 27/11/2013		DESIGNER A.S.MISH	DRAWN S.PATIL
	PRODUCT -		MANUFACTURER -	FINISH -
	SIZE -		DWG NO. 10042XS	RELIEF -
	SCALE 1:1		CDR NO. XAKS-42	REV -
	SHEET 1		TOTAL SHEETS 1	OF 1

NEX FLOW AIR PRODUCTS CORP.
 10520 YONCE STREET, UNIT 359-220 RICHMOND HILL, ON L4C 3C7
 TEL: (416) 410-1313 & FAX: (416) 410-1806 www.nfx-flow.com

OUTLINE DRAWING OF
42" X-STREAM AIR BLADE AIR KNIFE

1. LINEAR DIMS: ±.005
2. ANGLES = ± 1/2°
3. ROUNDOFF .010 TR
4. HOLES IN ACCORDANCE WITH AND 10397

REVISIONS
 REVISION NO. DATE BY

REVISIONS
 REVISION NO. DATE BY