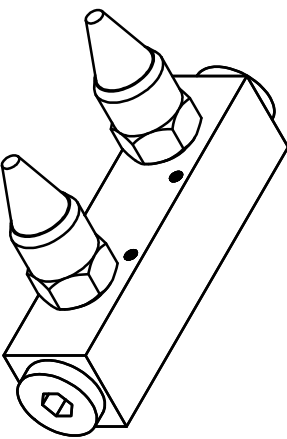
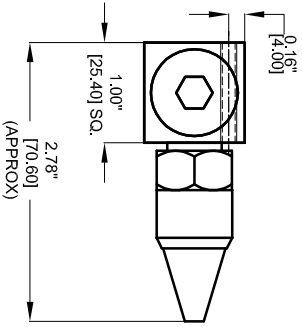
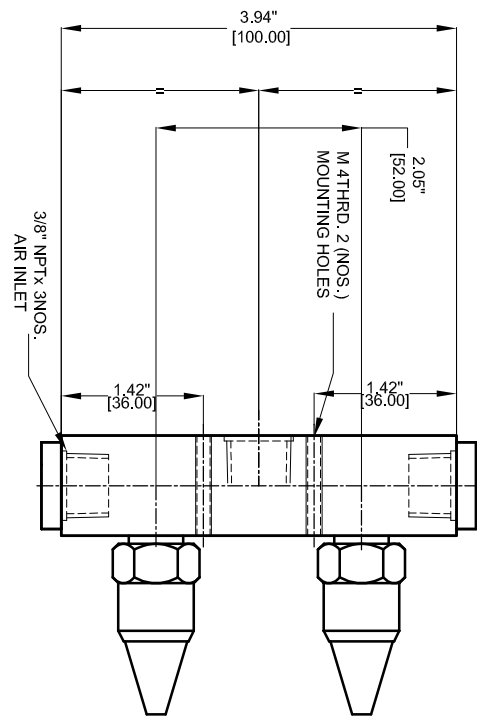


REV	DESCRIPTION	DATE	APPROVED
1	-	-	-



REQUIRED FINISHES OTHER FINISHES SPECIFIED 1. DIMS. ARE IN INCHES (MILL) UNLESS OTHERWISE SPECIFIED 2. DIMS. ARE TO BE MAINTAINED IN ACCORDANCE WITH ANSI Y14.5 (1982) 3. MACHINE FINISH 128 MICRO INCH RMS & BREAK SHARP CORNERS .005 TO .015 LIMITS 4. HOLES IN ACCORDANCE WITH ANSI 10.9B7		CONTINUED NUMBER CLIENT CONTRACTOR DATE 28/09/2014 DESIGN CHECKED DWA DRAWN DATE 28/09/2014 DIMENSIONS FINISH PRODUCT		REVISIONS 1 - -	
FINISH AL/SS304/SS316L		STRESS TENSILE MECHANICAL ELECTRICAL		DATE 28/09/2014	
PROJECTION 30°		SCALE 1:1		REV -	
MATERIAL AL/SS304/SS316L		SIZE -		DATE -	
FINISH -		CDR NO 46002-47004		SHEET 1 OF 1	
PART NO -		REV -		DATE -	
NEXT ASSEMBLY -		DATE -		REV -	
USED ON -		DATE -		REV -	
QTY PER PART NO -		DATE -		REV -	

NEX FLOW AIR PRODUCTS CORP.
 10620 YONCE STREET, UNIT 359-220 RICHMOND HILL, ON L4C 3C7
 TEL: (416) 410-1313 & FAX: (416) 410-1806 www.nex-flow.com

2 PORT STANDARD FLOW MANIFOLD WITH 47004 NOZZLE

