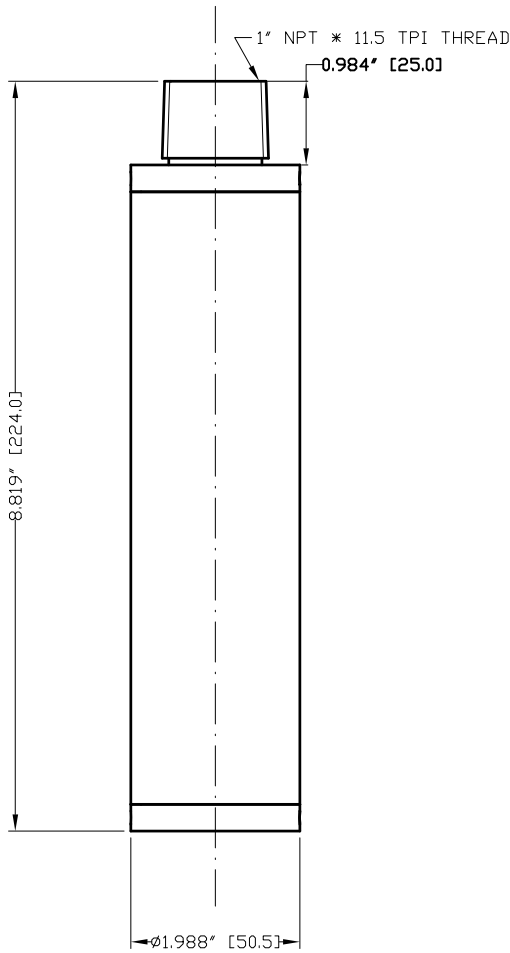
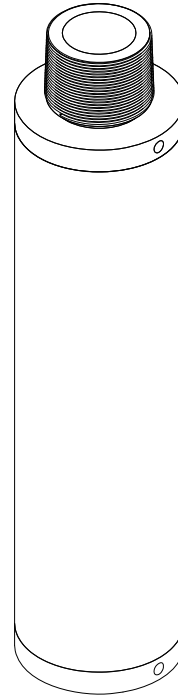
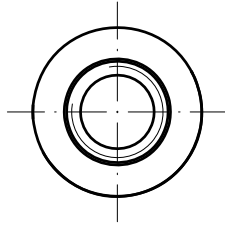


REVISIONS			
REV	DESCRIPTION	DATE	APPROVED
1			
2			



THIRD ANGLE PROJECTION		REQUIREMENTS—UNLESS OTHERWISE SPECIFIED	CONTRACT NUMBER —	NEX FLOW AIR PRODUCTS CORP. 10520 YONGE STREET, UNIT 358-220, RICHMOND HILL, ON L4C 3C7 TEL: (416) 410-1313 & FAX: (416) 410-1806 www.nex-flow.com								
		GENERAL	CLIENT —	DATE	TITLE							
MATERIAL	SS304	1. DIMS ARE IN INCHES (MM) 2. DIMENSIONING AND TOLERANCING IN ACCORDANCE WITH ANSI Y14.5 (1982) 3. MACHINE FINISH 125 MICRO INCH RMS 4. INTERNAL RADI .015 5. BREAK SHARP CORNERS .005 TO .015	CONTRACTOR —	20/08/14	OUTLINE DRAWING OF COLD END MUFFLER FOR LARGE VORTEX TUBE							
FINISH	BUFFING	LIMITS	DESIGN	CHECKED	PROJECT	G.A.	SIZE	CAGE CODE	DWG. NO.	RELEASE	REV	
		1. LINEAR DIMS. .XXX = .005 .XX = .010 .X = .030 2. ANGLES = ± 1/2° 3. RUNOUT .010 TR 4. HOLES IN ACCORDANCE WITH AND 10387	STRESS	MANUFACTURING	MATERIALS	ELECTRICAL	—	—	—	—	—	
			MECHANISM	ELECTRICAL	—	—	SCALE	1:1	CAD NO	CEM-L	SHEET	1 OF 1