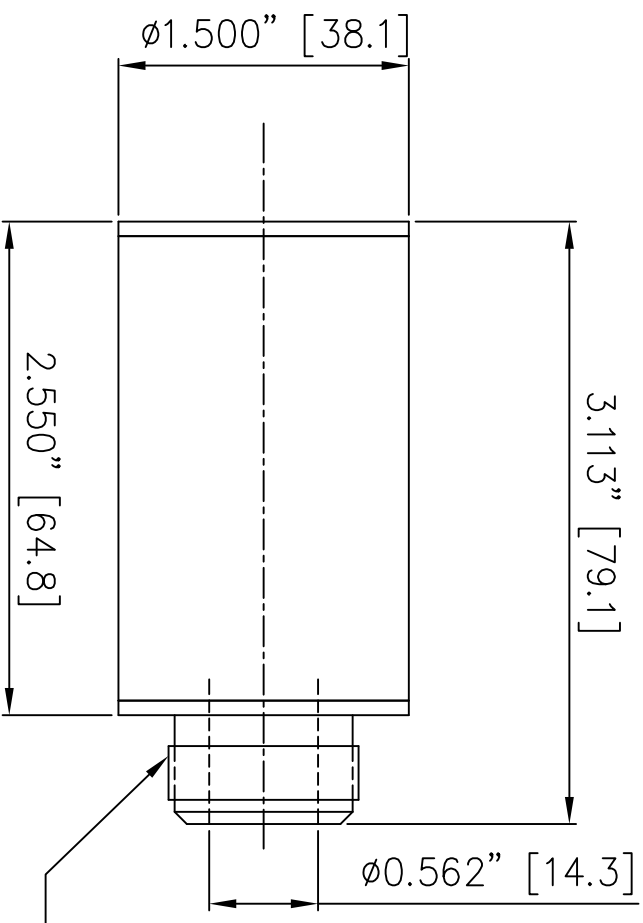


- NOTES:
- 1 ALL DIMENSIONS SHOWN ARE FINISH OPERATIONAL DIMENSIONS.
  - 2 PART TO BE PACKED PROPERLY TO AVOID ANY DAMAGE WHILE SHIPPING & HANDLING.
  - 3 ALL HORIZONTAL DIMENSIONS ARE SYMMETRICAL ABOUT VERTICAL CENTER LINE UNLESS OTHERWISE SPECIFIED.



1" X 20 TPI THD.

<b>FINISH</b> BUFFING		<b>THIRD ANGLE PROJECTION</b> 		<b>REQUIREMENTS/NOTES</b> OTHERWISE SPECIFIED	
<b>MATERIAL</b> SS 304		<b>LIMITS</b> 1. LINEAR DIMS $\pm .005$ $\pm .010$ $\pm .012$ 2. ANGLES = $1/2^\circ$		<b>GENERAL</b> 1. DIMS ARE IN INCHES (MM) 2. INTERNAL RADIUS (R) IS 3. BREAK SHARP CORNERS	
<b>CONTRACT NUMBER</b> -		<b>CLIENT</b> -		<b>DATE</b> 03/11/2014	
<b>CONTRACTOR</b> -		<b>DESIGN</b> LES		<b>SERIALIZED</b> ASHISH	
<b>PROJECT</b> -		<b>QA</b> -		<b>MANUFACTURING</b> -	
<b>STRESS</b> -		<b>MATERIALS</b> -		<b>SCALE</b> 1:1	
<b>MECHANICAL</b> -		<b>ELECTRICAL</b> -		<b>DATE</b> 03/11/2014	
<b>SIZE</b> C		<b>CODE CODE</b> -		<b>PMC NO.</b> 55002	
<b>SCALE</b> 1:1		<b>DATE</b> CEM-M		<b>REV</b> P 1	
<b>FOR MEDIUM VORTEX TUBE</b>		<b>OUTLINE DRAWING OF</b>		<b>RELEASE</b> P 1	
<b>NEX FLOW AIR PRODUCTS CORP.</b> 10520 YONCE STREET, UNIT 359-220, RICHMOND HILL, ON L4C 3C7 TEL.: (416) 410-1313 & FAX: (416) 410-1806 <a href="http://www.nex-flow.com">www.nex-flow.com</a>		<b>FOR MEDIUM VORTEX TUBE</b>		<b>REV</b> P 1	

5 4 3 2 1