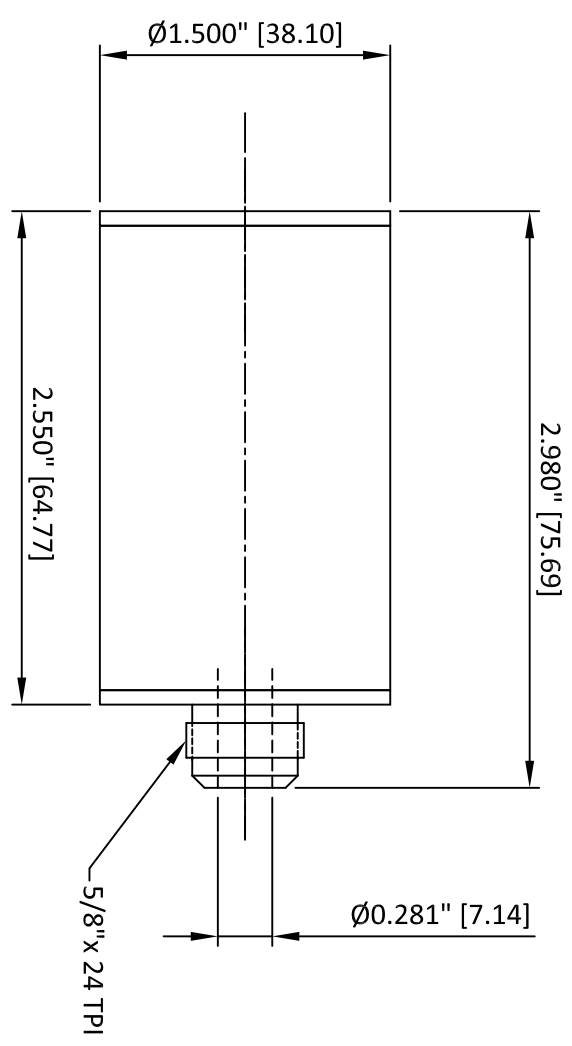



5 | 4 | 3 | 2 | 1

- NOTES:
- 1 ALL DIMENSIONS SHOWN ARE FINISH OPERATIONAL DIMENSIONS.
 - 2 PART TO BE PACKED PROPERLY TO AVOID ANY DAMAGE WHILE SHIPPING & HANDLING.
 - 3 ALL HORIZONTAL DIMENSIONS ARE SYMMETRICAL ABOUT VERTICAL CENTER LINE UNLESS OTHERWISE SPECIFIED.



THIRD ANGLE PROJECTION 		REQUIREMENTS DIMENSIONS SPECIFIED GENERAL	
MATERIAL SS 304		1. DIMS ARE IN INCHES (MM) 2. INTERNAL RADIUS 3. BREAK SHARP CORNERS	
CONTRACT NUMBER -		CLIENT -	
CONTRACTOR -		DATE 03/11/2014	
DESIGN LES		CHECKED ASHISH	
PROJECT QAL		QAL QAL	

NEX FLOW AIR PRODUCTS CORP
 10620 YONGE STREET, UNIT 35B-220, RICHMOND HILL, ON L4C 3C
 TEL: (416) 410-1313 & FAX: (416) 410-1806 WWW.nex-flow.com

OUTLINE DRAWING OF
COLD END MUFFLER
 FOR SMALL VAPOR TRAP