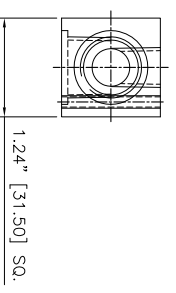
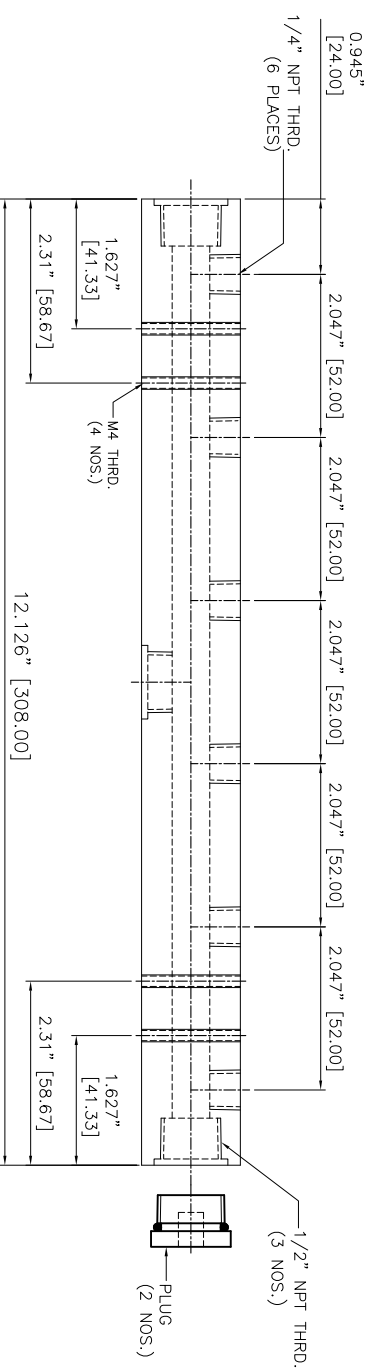


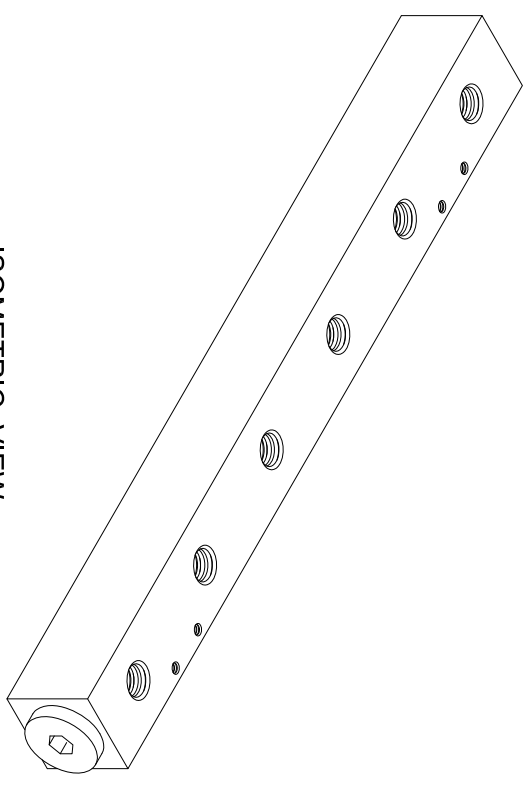
REVISIONS		DATE	APPROVED
REV	DESCRIPTION		
1			
2			

- NOTES:
- 1 ALL DIMENSIONS SHOWN ARE IN INCHES AND DIMENSIONS IN '()' ARE IN MM
  - 2 ALL DIMENSIONS SHOWN ARE FINISH OPERATIONAL DIMENSIONS WHICH INCLUDE RESIDUAL COATINGS UNLESS OTHERWISE SPECIFIED.
  - 3 PART TO BE FLAT PACKED PROPERLY TO AVOID ANY DAMAGE WHILE SHIPPING & HANDLING.
  - 4 ALL HORIZONTAL DIMENSIONS ARE SYMMETRICAL ABOUT VERTICAL CENTER LINE UNLESS OTHERWISE SPECIFIED.



FRONT VIEW

SIDE VIEW  
(without plug)



ISOMETRIC VIEW

<p><b>TEMP. AND PROTECTION</b></p> <p>SS 304/SS 316/AL</p>		<p><b>REQUIREMENTS-UNLESS OTHERWISE SPECIFIED</b></p> <p>1. DIM. ARE IN UNLESS NOTED</p> <p>2. DIMENSIONS AND TOLERANCES IN ACCORDANCE WITH ASH Y14.5 (1982)</p> <p>3. MAKE FINISH 125 MICRO INCH RMS</p> <p>4. BREAK SHARP CORNERS .005 TO .015</p>	<p><b>CONTRACT NUMBER</b></p> <p>CLIENT</p> <p>CONTRACTOR</p> <p>DATE 28/09/2014</p> <p>DESIGN S.PATIL</p> <p>DRAWN S.PATIL</p> <p>PRODUCT</p>	<p><b>NEX FLOW AIR PRODUCTS CORP.</b></p> <p>10520 YONCE STREET, UNIT 259-220 RICHMOND HILL, ON L4C 3C7</p> <p>TEL: (416) 410-1313 &amp; FAX: (416) 410-1806 <a href="http://www.nex-flow.com">www.nex-flow.com</a></p>
<p><b>FINISH</b></p> <p>-</p>	<p><b>STRESS</b></p> <p>TENSILE</p> <p>MECHANICAL</p>	<p><b>LIMITS</b></p> <p>1. LINEAR DIMS</p> <p>±.005</p> <p>±.010</p> <p>±.015</p> <p>2. ANGLES = ± 1/2°</p> <p>3. ROUNDOFF .010 R</p> <p>4. HOLES IN ACCORDANCE WITH AND 1039T</p>	<p><b>MANUFACTURING</b></p> <p>SIZE</p> <p>DWG CODE</p> <p>46006HF</p>	<p><b>6 PORT HIGH FLOW MANIFOLD</b></p> <p>DATE CODE</p> <p>DWG NO.</p> <p>46006HF</p>
<p><b>PART NO</b></p> <p>---</p>	<p><b>NEXT ASSEMBLY</b></p> <p>USED ON</p> <p>SS31</p>	<p><b>QTY REQ/PART NO</b></p> <p>---</p>	<p><b>SCALE</b></p> <p>1:1</p>	<p><b>CDR NO</b></p> <p>HE/MAN-6</p>

OUTLINE DRAWING OF  
6 PORT HIGH FLOW MANIFOLD

DATE CODE  
46006HF

SIZE  
---

DWG NO.  
46006HF

DATE  
28/09/2014

DESIGN  
S.PATIL

DRAWN  
S.PATIL

CONTRACTOR  
---

CLIENT  
---

CONTRACT NUMBER  
---

REQUIREMENTS-UNLESS OTHERWISE SPECIFIED

1. DIM. ARE IN UNLESS NOTED

2. DIMENSIONS AND TOLERANCES IN ACCORDANCE WITH ASH Y14.5 (1982)

3. MAKE FINISH 125 MICRO INCH RMS

4. BREAK SHARP CORNERS .005 TO .015

CONTRACT NUMBER

CLIENT

CONTRACTOR

DATE 28/09/2014

DESIGN S.PATIL

DRAWN S.PATIL

PRODUCT

NEX FLOW AIR PRODUCTS CORP.

10520 YONCE STREET, UNIT 259-220 RICHMOND HILL, ON L4C 3C7

TEL: (416) 410-1313 & FAX: (416) 410-1806 [www.nex-flow.com](http://www.nex-flow.com)

DATE CODE

46006HF

SIZE

---

DWG NO.

46006HF

6 PORT HIGH FLOW MANIFOLD

DATE

28/09/2014

DESIGN

S.PATIL

DRAWN

S.PATIL

CONTRACTOR

---

CLIENT

---

CONTRACT NUMBER

---

REQUIREMENTS-UNLESS OTHERWISE SPECIFIED

1. DIM. ARE IN UNLESS NOTED

2. DIMENSIONS AND TOLERANCES IN ACCORDANCE WITH ASH Y14.5 (1982)

3. MAKE FINISH 125 MICRO INCH RMS

4. BREAK SHARP CORNERS .005 TO .015

CONTRACT NUMBER

CLIENT

CONTRACTOR

DATE 28/09/2014

DESIGN S.PATIL

DRAWN S.PATIL

PRODUCT

NEX FLOW AIR PRODUCTS CORP.

10520 YONCE STREET, UNIT 259-220 RICHMOND HILL, ON L4C 3C7

TEL: (416) 410-1313 & FAX: (416) 410-1806 [www.nex-flow.com](http://www.nex-flow.com)

DATE CODE

46006HF

SIZE

---

DWG NO.

46006HF

6 PORT HIGH FLOW MANIFOLD

DATE

28/09/2014

DESIGN

S.PATIL

DRAWN

S.PATIL

CONTRACTOR

---

CLIENT

---

CONTRACT NUMBER

---

REQUIREMENTS-UNLESS OTHERWISE SPECIFIED

1. DIM. ARE IN UNLESS NOTED

2. DIMENSIONS AND TOLERANCES IN ACCORDANCE WITH ASH Y14.5 (1982)

3. MAKE FINISH 125 MICRO INCH RMS

4. BREAK SHARP CORNERS .005 TO .015

CONTRACT NUMBER

CLIENT

CONTRACTOR

DATE 28/09/2014

DESIGN S.PATIL

DRAWN S.PATIL

PRODUCT

NEX FLOW AIR PRODUCTS CORP.

10520 YONCE STREET, UNIT 259-220 RICHMOND HILL, ON L4C 3C7

TEL: (416) 410-1313 & FAX: (416) 410-1806 [www.nex-flow.com](http://www.nex-flow.com)

DATE CODE

46006HF

SIZE

---

DWG NO.

46006HF

6 PORT HIGH FLOW MANIFOLD

DATE

28/09/2014

DESIGN

S.PATIL

DRAWN

S.PATIL

CONTRACTOR

---

CLIENT

---

CONTRACT NUMBER

---

REQUIREMENTS-UNLESS OTHERWISE SPECIFIED

1. DIM. ARE IN UNLESS NOTED

2. DIMENSIONS AND TOLERANCES IN ACCORDANCE WITH ASH Y14.5 (1982)

3. MAKE FINISH 125 MICRO INCH RMS

4. BREAK SHARP CORNERS .005 TO .015

CONTRACT NUMBER

CLIENT

CONTRACTOR

DATE 28/09/2014

DESIGN S.PATIL

DRAWN S.PATIL

PRODUCT

NEX FLOW AIR PRODUCTS CORP.

10520 YONCE STREET, UNIT 259-220 RICHMOND HILL, ON L4C 3C7

TEL: (416) 410-1313 & FAX: (416) 410-1806 [www.nex-flow.com](http://www.nex-flow.com)

DATE CODE

46006HF

SIZE

---

DWG NO.

46006HF

6 PORT HIGH FLOW MANIFOLD

DATE

28/09/2014

DESIGN

S.PATIL

DRAWN

S.PATIL

CONTRACTOR

---

CLIENT

---

CONTRACT NUMBER

---

REQUIREMENTS-UNLESS OTHERWISE SPECIFIED

1. DIM. ARE IN UNLESS NOTED

2. DIMENSIONS AND TOLERANCES IN ACCORDANCE WITH ASH Y14.5 (1982)

3. MAKE FINISH 125 MICRO INCH RMS

4. BREAK SHARP CORNERS .005 TO .015

CONTRACT NUMBER

CLIENT

CONTRACTOR

DATE 28/09/2014

DESIGN S.PATIL

DRAWN S.PATIL

PRODUCT

NEX FLOW AIR PRODUCTS CORP.

10520 YONCE STREET, UNIT 259-220 RICHMOND HILL, ON L4C 3C7

TEL: (416) 410-1313 & FAX: (416) 410-1806 [www.nex-flow.com](http://www.nex-flow.com)

DATE CODE

46006HF

SIZE

---

DWG NO.

46006HF

6 PORT HIGH FLOW MANIFOLD

DATE

28/09/2014

DESIGN

S.PATIL

DRAWN

S.PATIL

CONTRACTOR

---

CLIENT

---

CONTRACT NUMBER

---

REQUIREMENTS-UNLESS OTHERWISE SPECIFIED

1. DIM. ARE IN UNLESS NOTED

2. DIMENSIONS AND TOLERANCES IN ACCORDANCE WITH ASH Y14.5 (1982)

3. MAKE FINISH 125 MICRO INCH RMS

4. BREAK SHARP CORNERS .005 TO .015

CONTRACT NUMBER

CLIENT

CONTRACTOR

DATE 28/09/2014

DESIGN S.PATIL

DRAWN S.PATIL

PRODUCT

NEX FLOW AIR PRODUCTS CORP.

10520 YONCE STREET, UNIT 259-220 RICHMOND HILL, ON L4C 3C7

TEL: (416) 410-1313 & FAX: (416) 410-1806 [www.nex-flow.com](http://www.nex-flow.com)

DATE CODE

46006HF

SIZE

---

DWG NO.

46006HF

6 PORT HIGH FLOW MANIFOLD

DATE

28/09/2014

DESIGN

S.PATIL

DRAWN

S.PATIL

CONTRACTOR

---

CLIENT

---

CONTRACT NUMBER

---

REQUIREMENTS-UNLESS OTHERWISE SPECIFIED

1. DIM. ARE IN UNLESS NOTED

2. DIMENSIONS AND TOLERANCES IN ACCORDANCE WITH ASH Y14.5 (1982)

3. MAKE FINISH 125 MICRO INCH RMS

4. BREAK SHARP CORNERS .005 TO .015

CONTRACT NUMBER

CLIENT

CONTRACTOR

DATE 28/09/2014

DESIGN S.PATIL

DRAWN S.PATIL

PRODUCT

NEX FLOW AIR PRODUCTS CORP.

10520 YONCE STREET, UNIT 259-220 RICHMOND HILL, ON L4C 3C7

TEL: (416) 410-1313 & FAX: (416) 410-1806 [www.nex-flow.com](http://www.nex-flow.com)

DATE CODE

46006HF

SIZE

---

DWG NO.

46006HF

6 PORT HIGH FLOW MANIFOLD

DATE

28/09/2014

DESIGN

S.PATIL