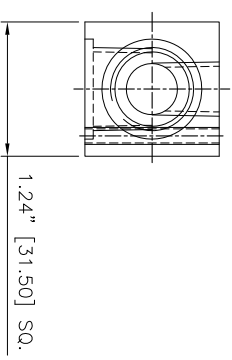
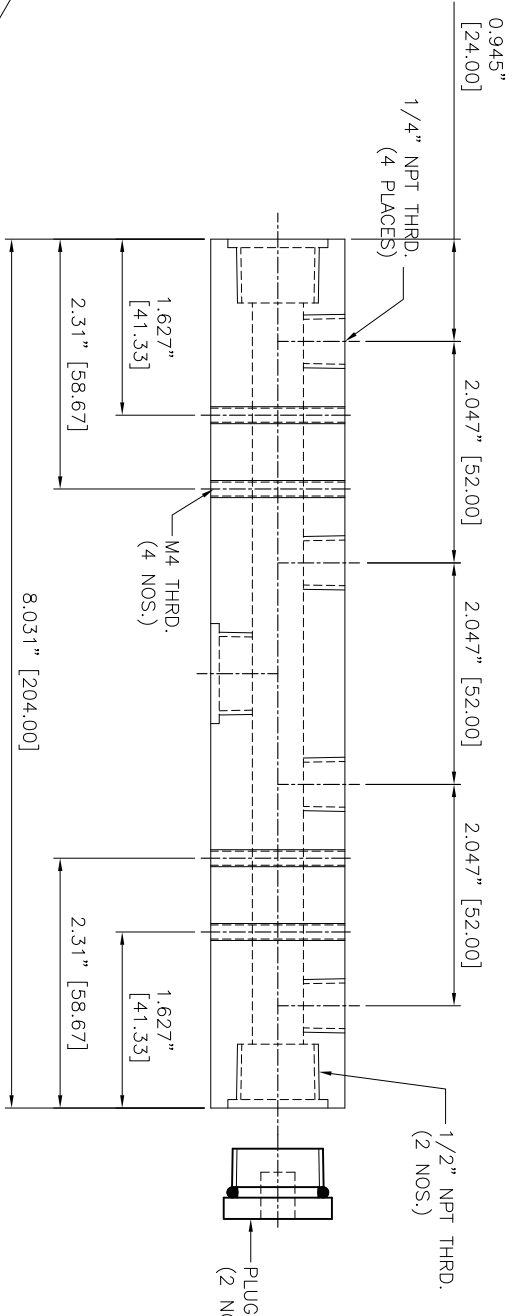


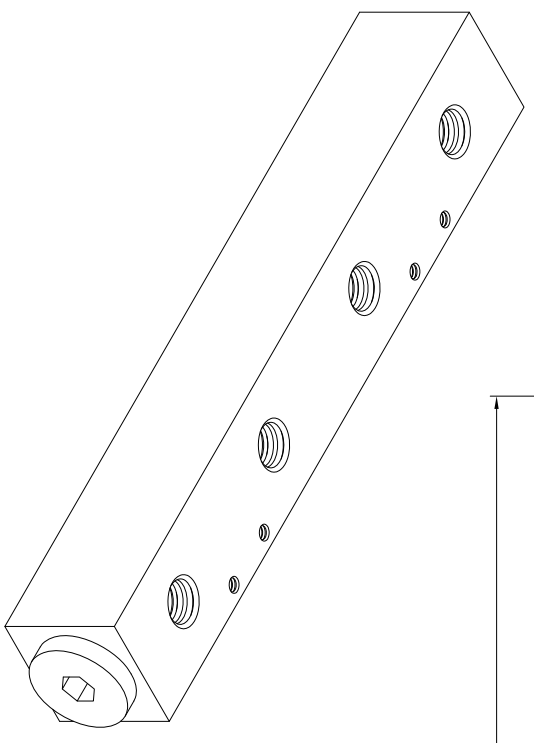
REVISIONS		DATE	APPROVED
REV	DESCRIPTION		
1			
2			

- NOTES:
- 1 ALL DIMENSIONS SHOWN ARE IN INCHES AND DIMENSIONS IN '()' ARE IN mm
  - 2 ALL DIMENSIONS SHOWN ARE FINISH OPERATIONAL DIMENSIONS WHICH INCLUDE RESIDUAL COATINGS UNLESS OTHERWISE SPECIFIED.
  - 3 PART TO BE FLAT PACKED PROPERLY TO AVOID ANY DAMAGE WHILE SHIPPING & HANDLING.
  - 4 ALL HORIZONTAL DIMENSIONS ARE SYMMETRICAL ABOUT VERTICAL CENTER LINE UNLESS OTHERWISE SPECIFIED.



**SIDE VIEW**  
(without plug)

**FRONT VIEW**



**ISOMETRIC VIEW**

<b>THIRD ANGLE PROJECTION</b>		<b>PLUG</b>	
<b>MATERIAL</b> SS 304/SS 316/AL		<b>FINISH</b> -	
<b>REQUIREMENTS-UNLESS OTHERWISE SPECIFIED</b>		<b>CONTRACT NUMBER</b> -	
1. DIM. USE SI UNLESS NOTED		<b>CLIENT</b> -	
2. DIMENSIONS AND TOLERANCES IN ACCORDANCE WITH ASME Y14.5 (1982)		<b>CONTRACTOR</b> -	
3. MAKE FINISH 125 MICRO INCH RMS		<b>DATE</b> 28/09/2014	
4. BREAK SHARP CORNERS .005 TO .015		<b>DESIGN</b> ASHISH	
<b>LIMITS</b>		<b>QA</b> -	
1. LINEAR DIMS: ±.005		<b>MANUFACTURING</b> -	
2. ANGLES = ± 1/2°		<b>TESTING</b> -	
3. ROUNDTOP .010 TR		<b>ELECTRICAL</b> -	
4. HOLES IN ACCORDANCE WITH AMO 10397		<b>SCALE</b> 1:1	
<b>REVISIONS</b>		<b>CDR NO</b> HFMAN-4	
<b>REV</b>		<b>SHEET</b> 1 OF 1	
<b>DESCRIPTION</b>		<b>REL</b> P	
<b>DATE</b>		<b>REV</b> -	
<b>APPROVED</b>			

**NEX FLOW AIR PRODUCTS CORP.**  
 10520 YONCE STREET, UNIT 359-220 RICHMOND HILL, ON L4C 3C7  
 TEL: (416) 410-1313 & FAX: (416) 410-1806 [www.nex-flow.com](http://www.nex-flow.com)

**OUTLINE DRAWING OF**  
**4 PORT HIGH FLOW MANIFOLD**

8 7 6 5 4 3 2 1