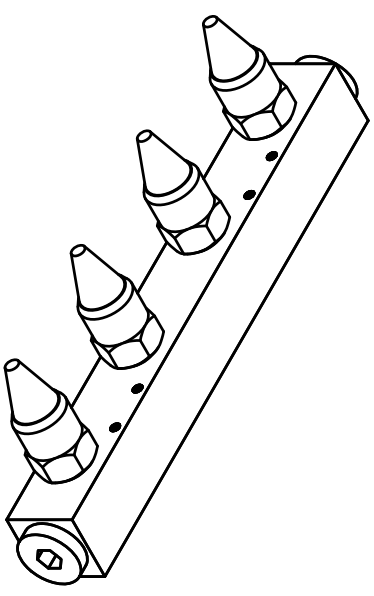
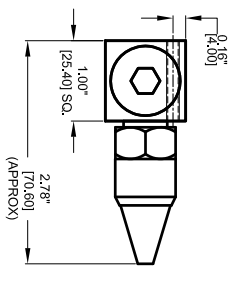
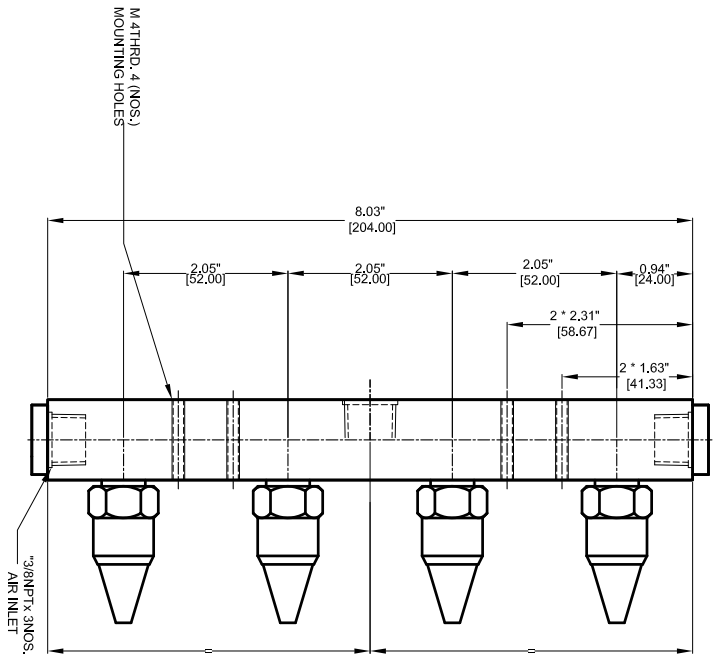


REVISIONS		DATE	APPROVED
REV	DESCRIPTION		
1	-	-	-



REVISIONS	DATE	APPROVED
1	-	-

1	LINEAR DIMS: ±0.005 ±0.010 ±0.015	2. ANGLES = ± 1/2°	3. ROUNDOFF 0.010 R	4. HOLES IN ACCORDANCE WITH ANSI 10.987
2	1. LINEAR DIMS: ±0.005 ±0.010 ±0.015	2. ANGLES = ± 1/2°	3. ROUNDOFF 0.010 R	4. HOLES IN ACCORDANCE WITH ANSI 10.987
3	1. LINEAR DIMS: ±0.005 ±0.010 ±0.015	2. ANGLES = ± 1/2°	3. ROUNDOFF 0.010 R	4. HOLES IN ACCORDANCE WITH ANSI 10.987
4	1. LINEAR DIMS: ±0.005 ±0.010 ±0.015	2. ANGLES = ± 1/2°	3. ROUNDOFF 0.010 R	4. HOLES IN ACCORDANCE WITH ANSI 10.987
5	1. LINEAR DIMS: ±0.005 ±0.010 ±0.015	2. ANGLES = ± 1/2°	3. ROUNDOFF 0.010 R	4. HOLES IN ACCORDANCE WITH ANSI 10.987

REQUIREMENTS - FINISHES	OTHER FINISHES SPECIFIED	CONTRACT NUMBER	-
1. DIMS AS SHOWN (UNLESS OTHERWISE SPECIFIED)		CLIENT	
2. DIMENSIONS AND TOLERANCES IN ACCORDANCE WITH ASME Y14.5 (1982)		CONTRACTOR	
3. MACHINE FINISH 125 MICRO INCH RMS		DRAWN	
4. BREAK SHARP CORNERS 0.005 TO 0.015		CHECKED	
		DATE	28/09/2014
		DESIGNED	
		ASSEMB	
		QA	
		PRODUCED	
		MANUFACTURING	
		INSPECTION	
		ELECTRICAL	
		SIZE	DWG NO. 460044-47004
		SCALE	1:1
		PAGE NO.	1
		MAN-4-NOZ&7004	SHEET 1
			OF 1

TYPICAL PROJECTION	
MATERIAL	AL/SS304/SS316L
FINISH	-
PART NO.	MAN-4-NOZ&7004
NEXT ASSEMBLY	-
USED ON	SS316
QTY PER PART NO.	1
PART NO.	MAN-4-NOZ&7004

NEX FLOW AIR PRODUCTS CORP.
10520 YONCE STREET, UNIT 259-220 RICHMOND HILL, ON L4C 3C7
TEL: (416) 410-1313 & FAX: (416) 410-1806 WWW.NEX-FLOW.COM

4 PORT OUTLINE DRAWING OF STANDARD FLOW MANIFOLD WITH 47004 NOZZLE