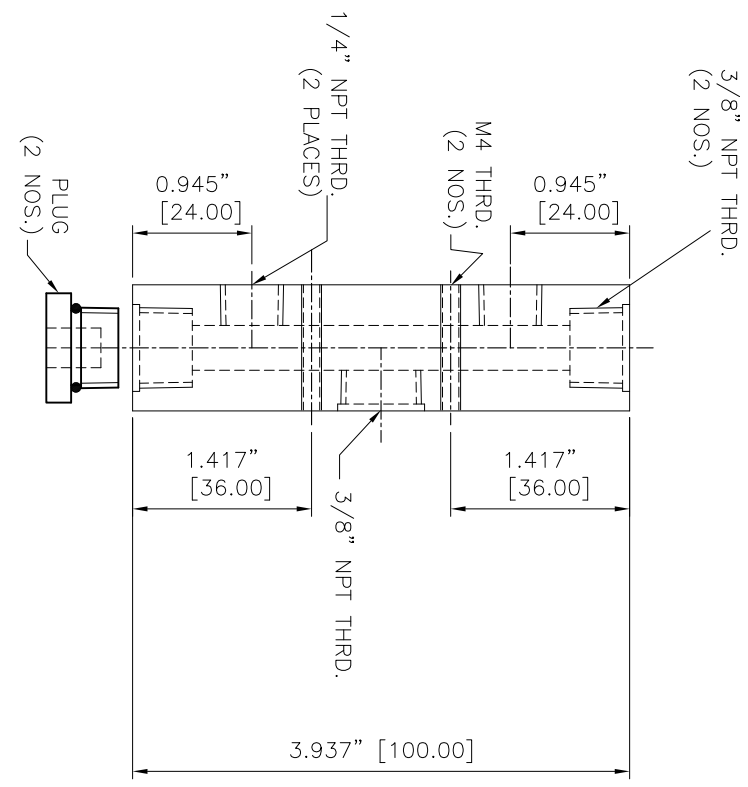
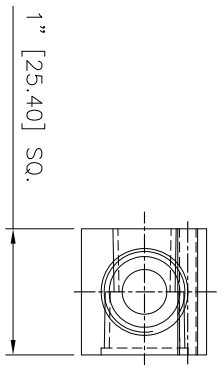


REVISIONS		DATE	APPROVED
REV	DESCRIPTION		
1			
2			

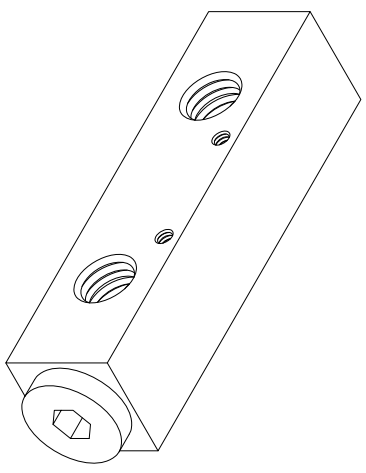
- NOTES:
- 1 ALL DIMENSIONS SHOWN ARE IN INCHES AND DIMENSIONS IN () ARE IN mm
 - 2 ALL DIMENSIONS SHOWN ARE FINISH OPERATIONAL DIMENSIONS WHICH INCLUDE RESIDUAL COATINGS UNLESS OTHERWISE SPECIFIED.
 - 3 PART TO BE FLAT PACKED PROPERLY TO AVOID ANY DAMAGE WHILE SHIPPING & HANDLING.
 - 4 ALL HORIZONTAL DIMENSIONS ARE SYMMETRICAL ABOUT VERTICAL CENTER LINE UNLESS OTHERWISE SPECIFIED.



TOP VIEW



FRONT VIEW
(without plug)



ISOMETRIC VIEW

REQUIREMENTS-QUALITY OTHERWISE SPECIFIED	CONTRACT NUMBER	NEX FLOW AIR PRODUCTS CORP.	
1. DIM. ARE IN UNLESS NOTED	CLIENT	10520 YONCE STREET, UNIT 259-220 RICHMOND HILL, ON L4C 3C7	
2. DIMENSIONS AND TOLERANCES IN ACCORDANCE WITH ASME Y14.5 (1982)	CONTRACTOR	TEL: (416) 410-1313 & FAX: (416) 410-1806 www.nex-flow.com	
3. MAKEUP FINISH 125 MICRO INCH RMS	DRAWN	DATE 02/05/2014	
4. BREAK SHARP CORNERS .005 TO .015	S.P./TITLE	DESIGN ASSEMBLY	
	PRODUCT	DIA.	
	STRESS	MANUFACTURING	
	THERMAL	MATERIALS	
	Mechanical	ELECTRICAL	
		SIZE	DWG NO
		SCALE	46002
			MAN-2
			SHEET 1
			OF 1

1. LINEAR DIMS:
 .001 = .005
 .002 = .010
 .003 = .015
 2. ANGLES = ± 1/2°
 3. ROUNDOFF .010 TR.
 4. HOLES IN ACCORDANCE WITH AMO 1039T

TEMP. AND PROTECTION	MATERIAL	FINISH
	SS 304/SS 316/AL	-

REQUIREMENTS-QUALITY OTHERWISE SPECIFIED	CONTRACT NUMBER	CLIENT	CONTRACTOR	DRAWN	S.P./TITLE	DATE	DESIGN	ASSEMBLY	DIA.	STRESS	MANUFACTURING	MATERIALS	ELECTRICAL

8 7 6 5 4 3 2 1