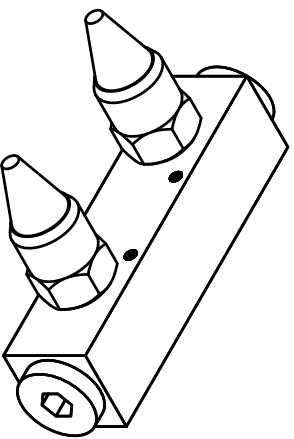
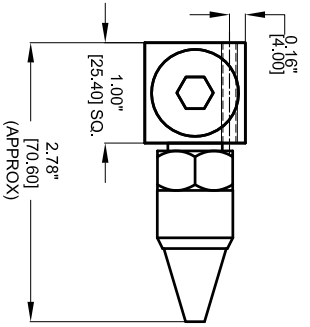
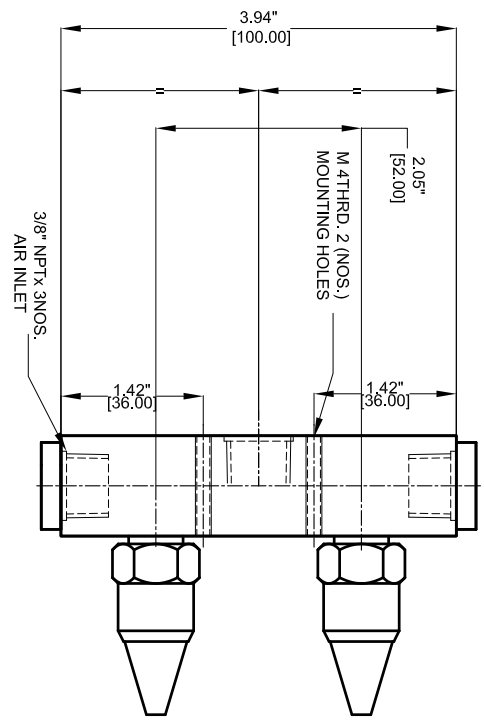


REV	DESCRIPTION	DATE	APPROVED
1	-	-	-



<b>TEMP. AND PROTECTION</b> 	<b>MATERIAL</b> AL/SS304/SS316L	FINISH	-
		PART NO.	-
<b>REQUIREMENTS - FINISHES</b> OTHERWISE SPECIFIED	CONTRACT NUMBER	-	
	CLIENT	-	
<b>1. DIM. USE SI UNITS (STANDARD)</b> <b>2. DIMENSIONING AND TOLERANCING IN ACCORDANCE WITH ASME Y14.5 (1982)</b> <b>3. MACHINE FINISH 125 MICRO INCH RMS</b> <b>4. BREAK SHARP CORNERS .005 TO .015</b>	DRAWN	28/09/2014	
	CHECKED	ASB/MSH	
<b>1. LINEAR DIMS:</b> .001 = .005 .002 = .010 .003 = .015 <b>2. ANGLES = ± 1/2°</b> <b>3. ROUNDOFF .010 TR</b> <b>4. HOLES IN ACCORDANCE WITH AND 1039T</b>	DATE	28/09/2014	
	BY	ASB/MSH	
<b>STRESS</b> TENSILE MECHANICAL	MANUFACTURING	46002+47004	
	WARRANTY	MAN-24NOZ47004	
<b>SIZE</b> DATE CODE SCALE	DWG NO.	46002+47004	
	GOVT NO.	MAN-24NOZ47004	
<b>REVISIONS</b>	SHEET	1 OF 1	
	REV	1	

**NEX FLOW AIR PRODUCTS CORP.**  
10520 YONCE STREET, UNIT 359-220 RICHMOND HILL, ON L4C 3C7  
TEL: (416) 410-1313 & FAX: (416) 410-1806 [www.nex-flow.com](http://www.nex-flow.com)

**2 PORT STANDARD FLOW MANIFOLD WITH 47004 NOZZLE**

8 7 6 5 4 3 2 1

A B C D E