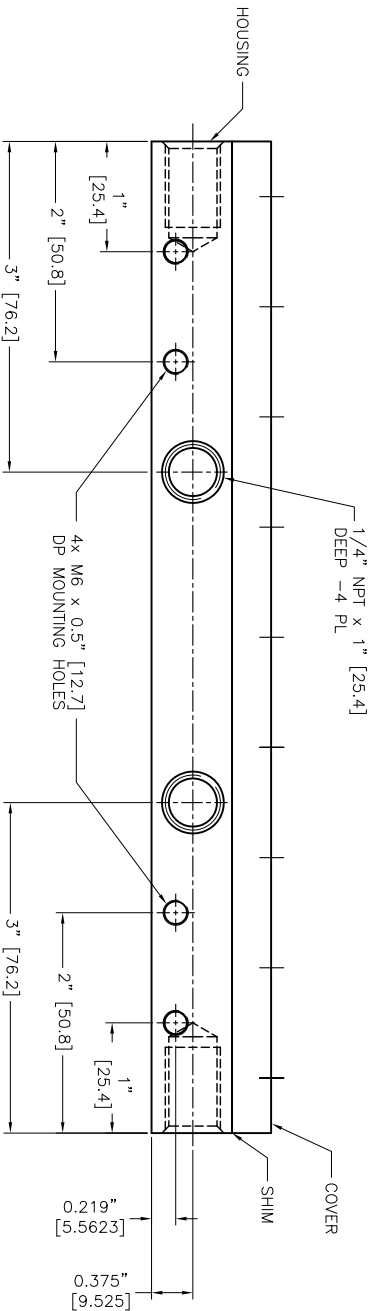
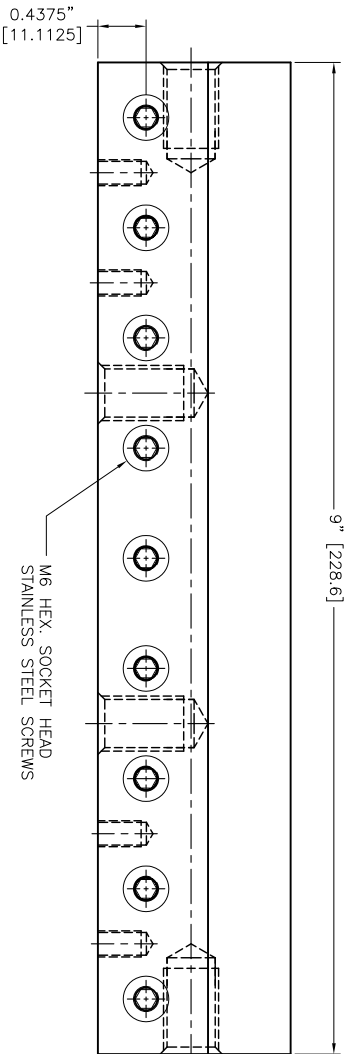
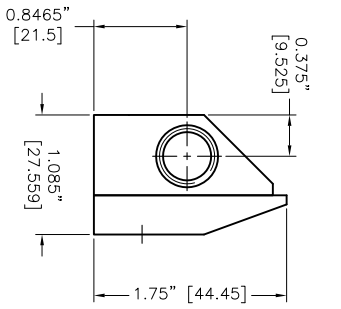


- NOTES:
- 1 ALL DIMENSIONS SHOWN ARE FINISH OPERATIONAL DIMENSIONS WHICH INCLUDE RESIDUAL COATINGS UNLESS OTHERWISE SPECIFIED.
  - 2 PART TO BE PACKED PROPERLY TO AVOID ANY DAMAGE WHILE SHIPPING & HANDLING.
  - 3 ALL HORIZONTAL DIMENSIONS ARE SYMMETRICAL ABOUT CENTER LINE UNLESS OTHERWISE SPECIFIED.



TEMPERATURE PROTECTION											
ALUMINIUM											
FINISH	-										
PART NO.											
NEXT ASSEMBLY											
USED ON											
QTY PER PART NO.											

REQUIREMENTS (UNLESS OTHERWISE SPECIFIED)	CONTRACT NUMBER	CLIENT	CONTRACTOR	DATE	DATE OF ISSUE
1. DRAWING AND TOLERANCES IN ACCORDANCE WITH ANSI Y14.5 (1982)				27/11/2013	
2. MAKE FINISH 126 MICRO INCH RMS					
3. BREAK SHARP CORNERS .005 TO .015					
4. HOLES IN ACCORDANCE WITH ANSI 10.9.1					

STRESSES	MANUFACTURING	REVISIONS	SCALE	DATE	QTY
TENSILE			1:1		
CMPRESSIVE					
SHEAR					
TORSION					
ELECTRICAL					

ENGINEERING	DRAWN	DATE	REV